



科技 创新 专业 安全



旋涡气泵/气环风机/高压鼓风机
Side Channel Blower/Regenerative Blower

北京美其乐机电设备有限公司
地址：北京市通州区中关村科技园金桥产业基地
电话：010-61589885
传真：010-61589885
网址：www.mqlblower.com

Beijing Meiqile Mechanical & Electrical Equipment Co.,Ltd
Address: Golden Bridge Industrial Base Tongzhou Beijing China
Tel: 010-61589885
Fax: 010-61589885
Web: www.mqlblower.com



北京美其乐机电设备有限公司

Beijing Meiqile Mechanical & Electrical Equipment Co.,Ltd

企业简介

北京美其乐机电设备有限公司成立于北京通州区科技园区金桥科技产业基地，是一家专注生产与销售高压鼓风机、旋涡气泵、气环真空泵的企业。

本公司高压鼓风机生产工艺源自德国汉诺威大学，拥有全球高压鼓风机的核心技术，并具备先进的检测和生产能力。自进入市场以来，凭借精湛的工艺，精益求精的品质迅速占领国内市场并出口至全球几十个国家，得到客户很好地反馈。

风机整机采用ADC12铝合金压铸成型，电机采用双压宽频率电机，不需要经过任何的改动和测试就可以在全球使用，并且可以配套防爆电机，生产设备均采用日本马扎克车削中心，德国卡尔申克平衡机，瑞典海克斯康旗下三坐标测量机，保证设备能耗低、效率高 噪音低、外形美观、使用寿命长特点。

公司始终坚持“敬业奉献、团结务实、励精图治、卓越创新”的精神，为社会奉献高效节能的风机，另外可提供ODM, OEM服务，欢迎各界朋友莅临参观、指导和业务洽谈。

Beijing Meiqlle Mechanical & Electrical Equipment Co.,Ltd is a professional ring blower, regenerative blower, side channel blower manufacturer.

We have blower development, test and production center with main technology is originated from German Hanover university focus on good and stable quality. Since entering the market, with superb technology, keep improving the quality of the rapidly occupation of the domestic market and exported to dozens of countries around the world, receive customer feedback very well.

The blower adopts ADC12 alloy die casting, the motors for blower are range for 50Hz and 60 Hz, this makes them the ideal solution for worldwide use without modification or test. And it can be equipped with explosion-proof motors. The production equipments were imported from Japanese SANKI(MAZAK) turning center, German Carl Shengke (SCHENCK) balance machine and Sweden(HEXASON) three coordinate measuring machine to insure the product low energy consumption, low noise, beautiful appearance and long service life.



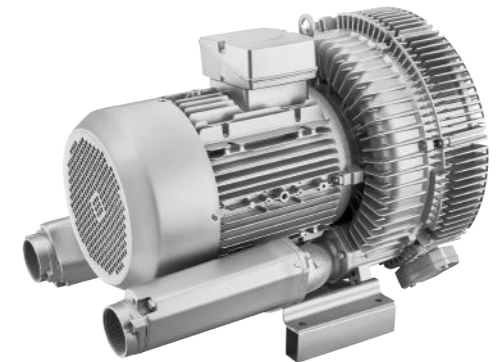
2GH 双叶轮风机



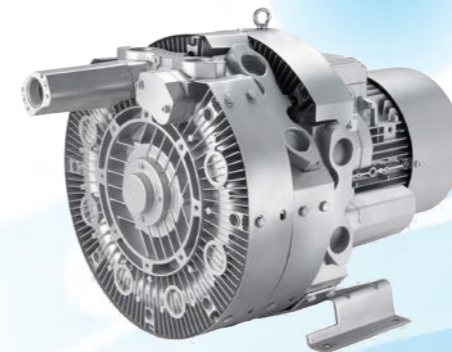
2GH单叶轮风机



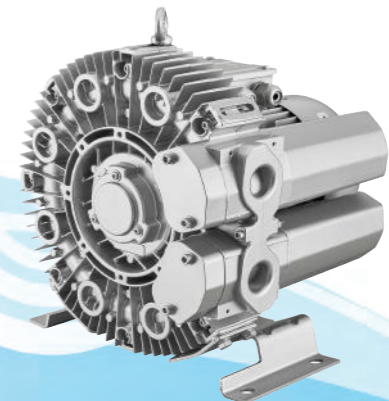
2GH 943立式安装



2GH双叶轮大流量



4GH三叶轮超高压



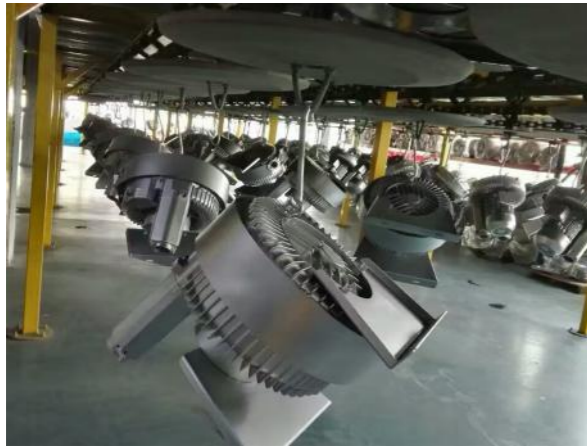
4GH单叶轮



变频防爆（非标定制）



托泵（皮带轮传输）



生产车间
PRODUCTION DEPARTMENT



安装车间
INSTALLATION DEPARTMENT



高效 · 節能 · 環保
High Efficiency · Energysaving · Environmental

» 100%無油無污染，平靜似水，運轉如一。大量的裝機實例證明了其自身優化的效率，運行的安全，普遍的應用和最大的可靠性。
100% oil free design, low shake, stable performance. A large number of installed instance proved their efficiency optimization, operation safety, widespread application and the best reliability



日本马扎克车床
JAPANESE MAZAK CNC TURNING CENTER



日本马扎克加工中心
JAPANESE MAZAK MACHINE CENTER



瑞典海克斯康三坐标
SWEDEN HEXACON
THREE COORDINATE MACHINE



德国卡尔申克平衡机
GERMAN SCHENCK
BALANCE MACHINE

目录 Contents

- ★ G系列气环风机概述
G Series side channel blower 03-04
- ★ 2GH 系列
2GH Series 05-24
- ★ 4GH 系列
4GH Series 25-30
- ★ 安装尺寸
Dimension 31-42
- ★ 附录
Annex 43-48



- ★ 罗茨风机
Lobes Roots blower 47-60

G系列气环风机概述

G Series side channel blower

应用范围	Applications
工业吸尘器	Industrial Vacuum cleaners
塑料行业	Plastics industry
包装行业	Packaging industry
纺织行业	Textile industry
污水处理曝气	Ventilation of sewage treatment plants
灌装系统	Filling system
牙科真空设备	Dental vacuum equipment
气体分析	Gas analysis
鱼塘增氧	Increases oxygen fishpond
物料提升和保持	Enhance and maintain the material
土壤修复	Soil treatment
激光打印机	Laser printer
干燥建筑物	Drying out buildings
印刷和造纸工业	Printing and paper industry
工业流水线	Industrial pipeline
游泳池设备/按摩浴缸	Swimming pool technology/Jacuzzi
气体增压	Gas booster
真空包装系统	Vacuum packag system



G系列风机用于工业吸尘



G系列风机用于污水处理



G系列风机用于吸附传送



G系列风机用于加压输送

全球通用 永不落后

G系列气环式风机以采用宽压双频。保护等级IP55（绝缘等级F）的电机为特色。这使得它成为全球通用的最佳解决方案。它们可以不经任何的改动和测试就在欧洲、美洲和亚洲使用，而且这些产品我们都备有库存，可以随时满足您的需求。

Ex stock for use world-wide

The G_series side channel blower feature voltage range motors for 50Hz and 60 Hz in protection class IP54(insulation class F) This makes them the ideal solution for world wide use. They can be used without any modifications or tests in Europe , America and Asia . They are mostly available ex stock.They are available for your requirements anytime.

G系列气环泵工作原理

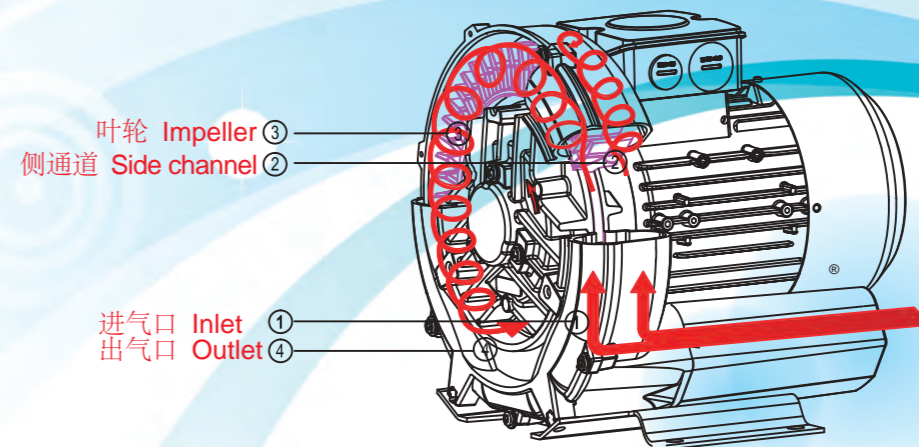
G系列的叶轮直接安装在电机转子上，是完全地无接触压缩。由于泵轴承安装在压缩腔外，所以即便工作在最大的压差下，也能确保机器的最大工作可靠性。

气体由**进气口1**吸入，当它进入**侧通道2**以后，旋转**叶轮3**在旋转方向上给气体一个速度，同时叶片上的离心力使气体向外加速并压力增加，随着旋转的进行，气体的动能增加，使得沿侧通道的气体压力进一步增加。随着侧通道在出口初变窄，气体被挤出叶片并通过**出气口4**排出泵体。

G_series operating principle

The impellers in the G_series machines are mounted directly on the motor shaft for noncontact compression entirely without friction.Maximum operational reliability,even at high differential pressures. is ensured by the arrangement of the bearings outside the compression chamber.

The gas is taken in through the **inlet 1**.As it enters the **side channel 2**,the rotating **impeller 3** imparts velocity to the gas in the direction of rotation.Centrifugal force in the impeller blades accelerates the gas outward and the pressure increase.Every rotation adds kinetic energy . resulting in the further increase of the pressure along the side channel. The side channel narrows at the rotor,sweeping the gas off the impeller blades and discharging it through the **outlet silencer 4** where it exits the side channel blower.



2GH 单相电机 / 2GH Single-phase motor

气环风机的选型和订购参数

Side channel blower selection and ordering parameters

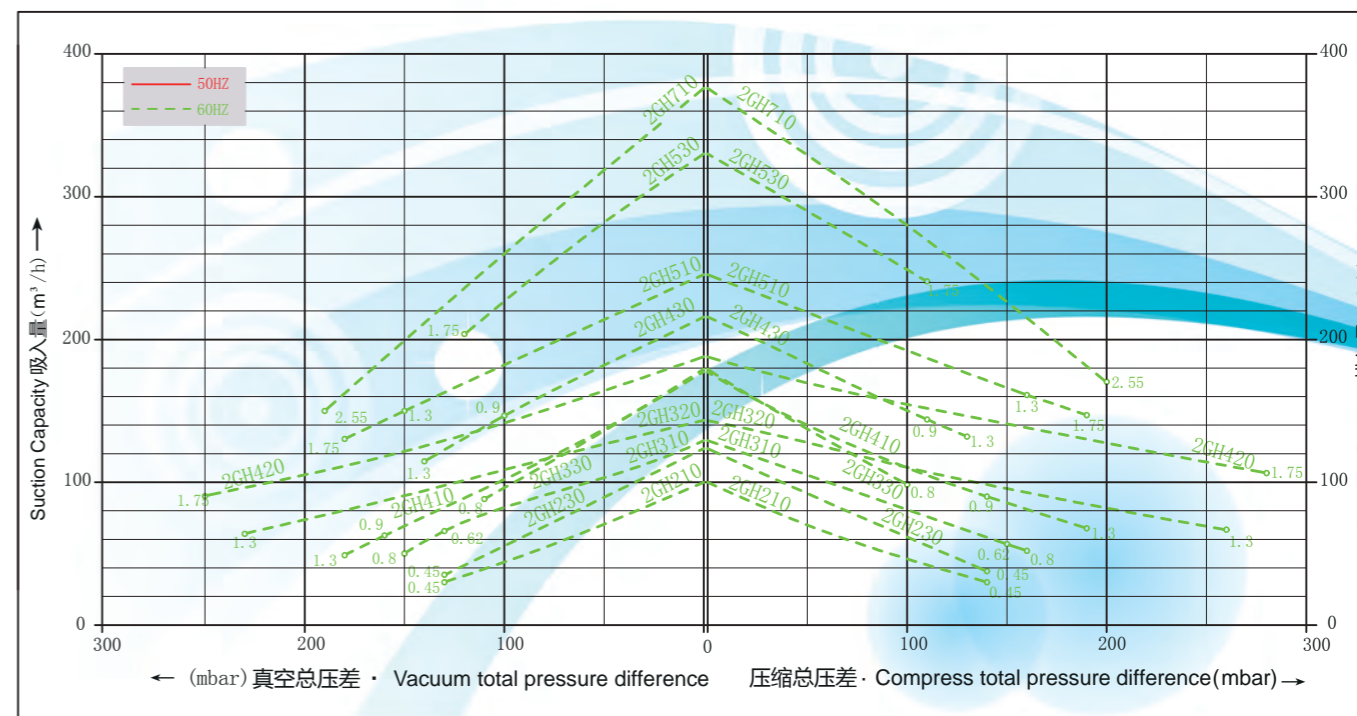
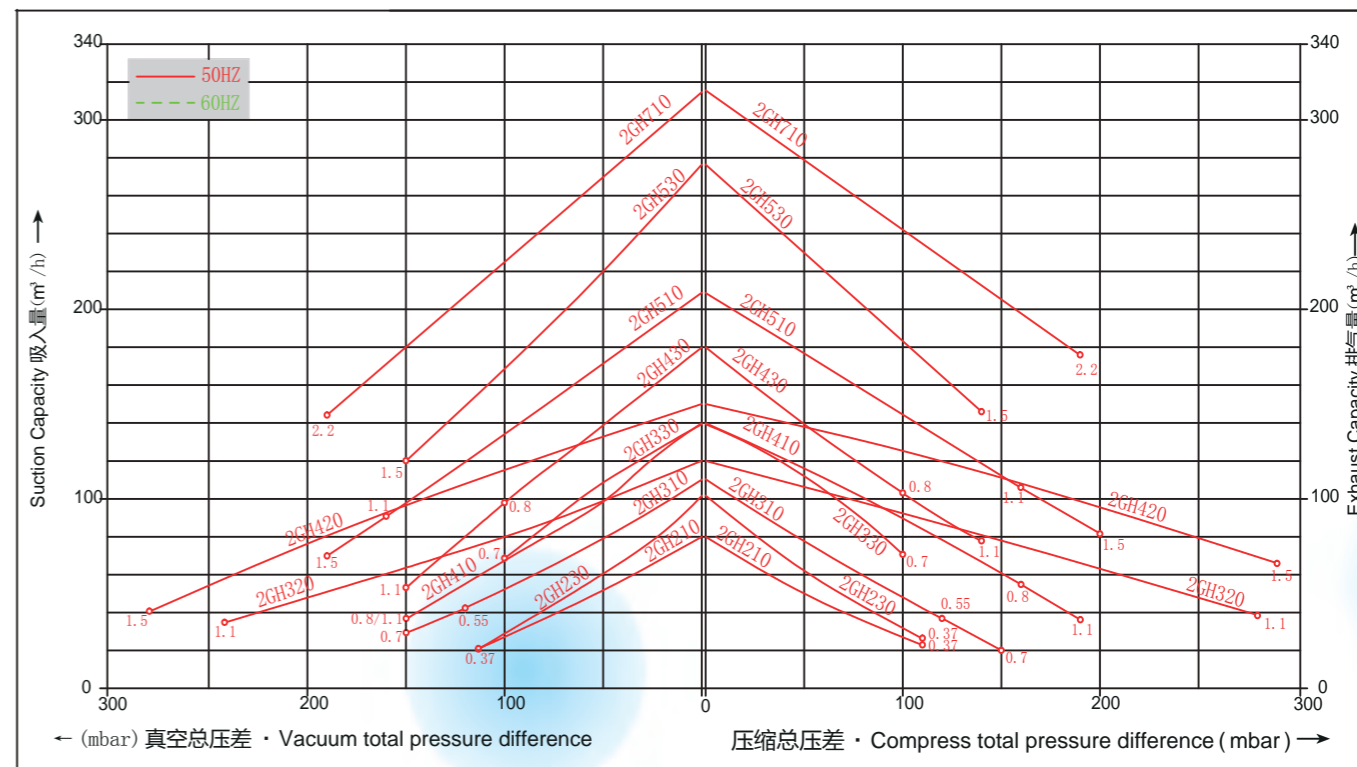


订购型号 Order No.	电机 MOTOR				重量 weight approx KG	噪音 Sound pressure level dB(A)	最大流量 Maximum airflow m³/h	最高真空 Maximum Vacuum mbar	最高压力 Maximum pressure mbar	卸压阀 Pressure relief valve Number × type
	频率 Frequency HZ	额定 Rated								
		输出功率 output KW	电压 voltage V	电流 current A						
2GH 210-A11	50	0.37	230	2.7	11	53	80	-110	110	1 x 2BX2 110/.... 141
	60	0.45	230	3.3		56	96	-130	140	1 x 2BX2 114/.... 142
2GH 230-A11	50	0.37	230	2.7	11	54	100	-110	110	1 x 2BX2 110/.... 141
	60	0.45	230	3.3		57	120	-130	140	1 x 2BX2 114/.... 142
2GH 310-A01	50	0.55	230	3.9	13	55	100	-120	120	1 x 2BX2 110/.... 141
	60	0.62	230	4.4		57	120	-130	150	1 x 2BX2 114/.... 142
2GH 310-A11	50	0.7	230	5.0	14	55	100	-150	150	1 x 2BX2 110/.... 141
	60	0.8	230	5.7		57	120	-150	160	1 x 2BX2 114/.... 142
2GH 320-A31	50	1.1	230	7.0	17	58	120	-240	280	1 x 2BX2 110/.... 141
	60	1.3	230	8.4		60	145	-230	260	1 x 2BX2 114/.... 142
2GH 330-A11	50	0.7	230	5.0	14	56	145	-100	100	1 x 2BX2 110/.... 141
	60	0.8	230	5.7		58	165	-110	100	1 x 2BX2 114/.... 142
2GH 410-A11	50	0.8	230	5.2	15	63	145	-150	160	1 x 2BX2 110/.... 141
	60	0.9	230	5.8		64	175	-160	140	1 x 2BX2 114/.... 142
2GH 410-A21	50	1.1	230	7.0	16	63	145	-150	190	1 x 2BX2 110/.... 141
	60	1.3	230	8.4		64	175	-180	190	1 x 2BX2 114/.... 142
2GH 420-A31	50	1.5	230	9.4	26	66	150	-280	290	1 x 2BX2 110/.... 141
	60	1.75	230	11		69	180	-250	280	1 x 2BX2 114/.... 142
2GH 430-A11	50	0.8	230	5.2	16	64	180	-100	110	1 x 2BX2 110/.... 141
	60	0.9	230	5.8		66	210	-100	110	1 x 2BX2 114/.... 142
2GH 430-A21	50	1.1	230	7.0	17	64	180	-150	140	1 x 2BX2 110/.... 141
	60	1.3	230	8.4		66	210	-140	130	1 x 2BX2 114/.... 142
2GH 510-A11	50	1.1	230	7.0	21	64	210	-160	160	1 x 2BX2 110/.... 145
	60	1.3	230	8.4		70	255	-150	160	1 x 2BX2 114/.... 146
2GH 510-A21	50	1.5	230	9.4	24	64	210	-190	200	1 x 2BX2 110/.... 145
	60	1.75	230	11		70	255	-180	180	1 x 2BX2 114/.... 146
2GH 530-A21	50	1.5	230	9.4	26	65	270	-150	140	1 x 2BX2 110/.... 145
	60	1.75	230	11		71	330	-120	110	1 x 2BX2 114/.... 146
2GH 710-A11	50	2.2	230	13.7	30	72	318	-190	190	1 x 2BX2 110/.... 145
	60	2.55	230	16		74	376	-190	200	1 x 2BX2 114/.... 146

2GH 单相电机 / 2GH Single-phase motor

下面的性能曲线是在抽吸15°C空气，排气压力1013mbar的工况下测出的，允差±10%，吸入空气和环境温度不超过 25°C时，仍可达到图示总压差。

The performance curves are valid for pumping air at 15°C at the inlet flanges with an air pressure of 1013 mbar and atolerance of ±10%.The total pressure differences are valid up to an intake and ambient temperatrue of 25°C .



2GH 单相电机 / 2GH Single-phase motor

气环风机的选型和订购参数

Side channel blower selection and ordering parameters

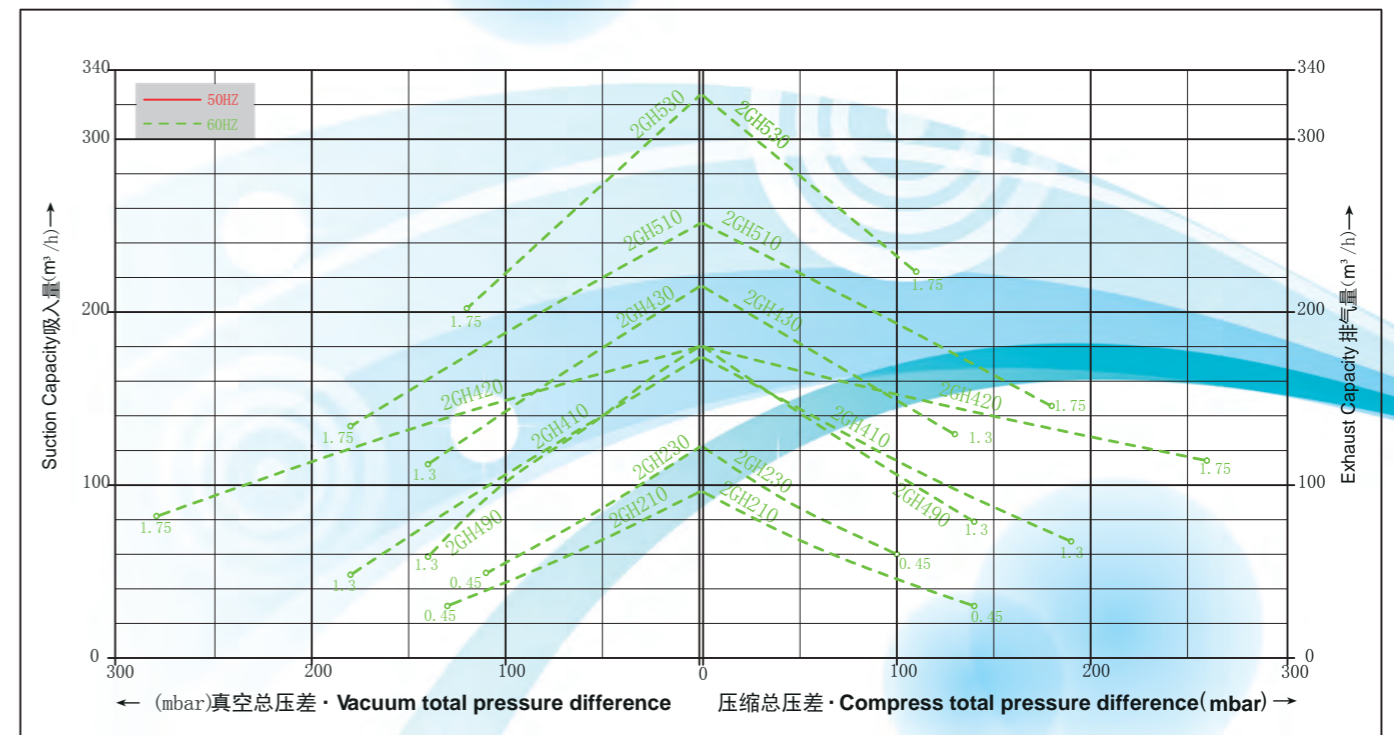
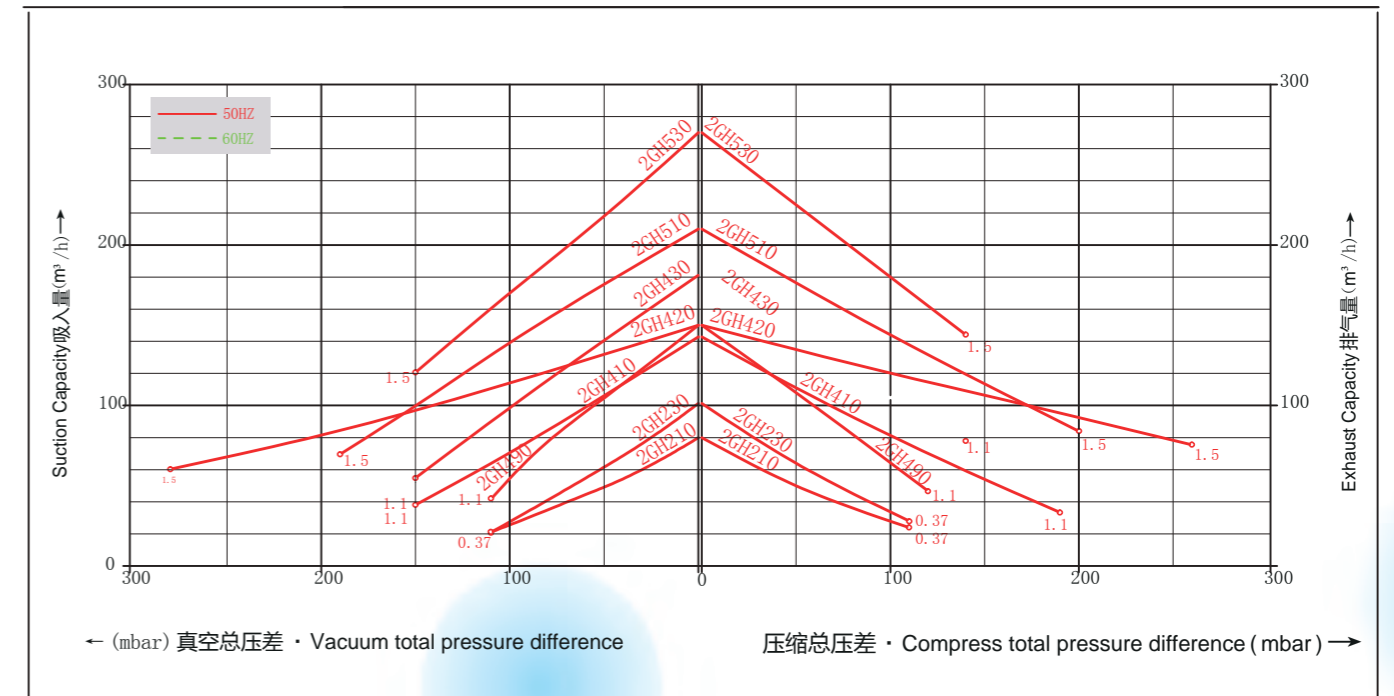


订购型号	电机				重量	噪音	最大流量	最高真空	最高压力	卸压阀
	频率	额定								
		输出功率	电压	电流						
Order No.	Frequency	Rated output	Rated voltage	Rated current	Weight approx	Sound Pressure level	Maximum airflow	Maximum Vacuum	Maximum pressure	Pressure relief valve
	HZ	KW	V	A	KG	DB(A)	m³/h	mbar	mbar	Numbers × type
2GH 210-V15	50	0.37	115/230	5.4/2.7	11	53	80	-110	110	1x2BX2 110/...141
	60	0.45	115/230	6.6/3.3		56	96	-130	140	1x2BX2 114/...142
2GH 230-V15	50	0.37	115/230	5.4/2.7	11	54	101	-110	110	1x2BX2 110/...141
	60	0.45	115/230	6.6/3.3		57	121	-110	100	1x2BX2 114/...142
2GH 410-V25	50	1.1	115/230	14/7.0	16	63	148	-150	190	1x2BX2 110/...141
	60	1.3	115/230	16.8/8.4		64	190	-180	190	1x2BX2 114/...142
2GH 420-V45	50	1.5	115/230	18.8/9.4	27	66	150	-280	260	1x2BX2 110/...141
	60	1.75	115/230	22/11		69	190	-280	260	1x2BX2 114/...142
2GH 430-V25	50	1.1	115/230	14/7.0	16	64	180	-150	140	1x2BX2 110/...141
	60	1.3	115/230	16.8/8.4		65	212	-140	130	1x2BX2 110/...141
2GH 490-V25	50	1.1	115/230	14/7.0	17	63	142	-110	120	1x2BX2 110/...141
	60	1.3	115/230	16.8/8.4		64	172	-140	140	1x2BX2 114/...142
2GH 510-V35	50	1.5	115/230	18.8/9.4	26	64	210	-190	200	1x2BX2 110/...145
	60	1.75	115/230	22/11		70	255	-180	180	1x2BX2 110/...146
2GH 530-V35	50	1.5	115/230	18.8/9.4	26	65	270	-150	140	1x2BX2 110/...141
	60	1.75	115/230	22/11		71	325	-120	110	1x2BX2 114/...146

2GH 单相电机 / 2GH Single-phase motor

下面的性能曲线是在抽吸15°C空气，排气压力1013mbar的工况下测出的，允差±10%，吸入空气和环境温度不超过 25°C时，仍可达到图示总压差。

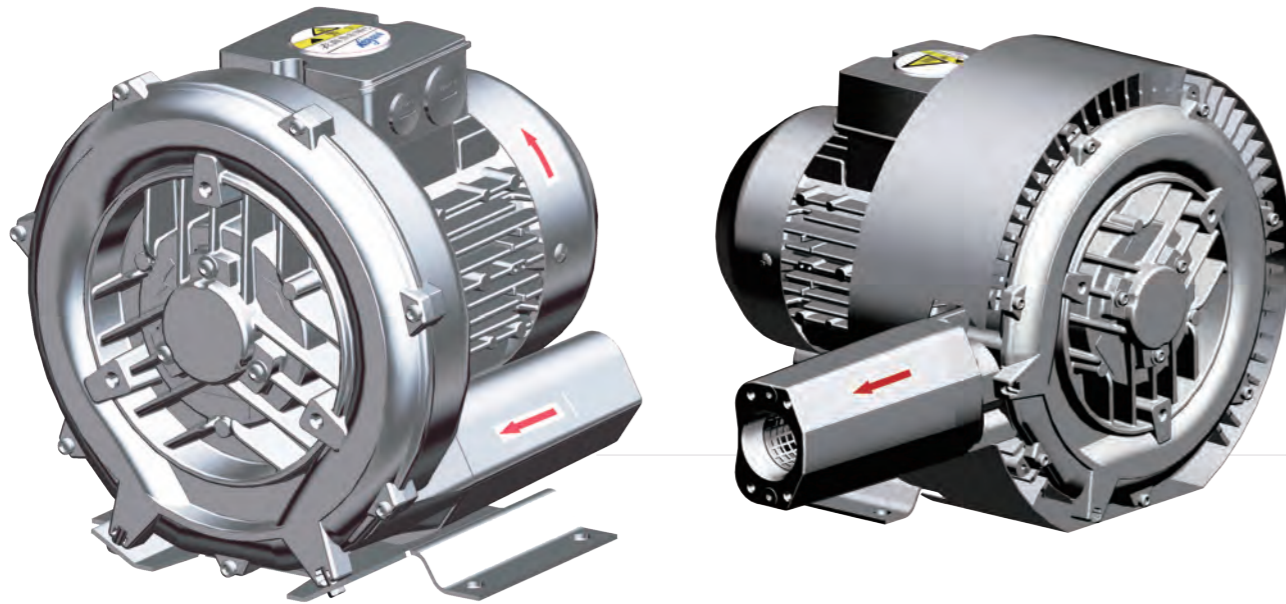
The performance curves are valid for pumping air at 15°C at the inlet flanges with an air pressure of 1013 mbar and atolerance of ±10%.The total pressure differences are valid up to an intake and ambient temprature of 25°C .



2GH 2系列 三相电机 / 2GH 2 Three-phase motor

气环风机的选型和订购参数

Side channel blower selection and ordering parameters

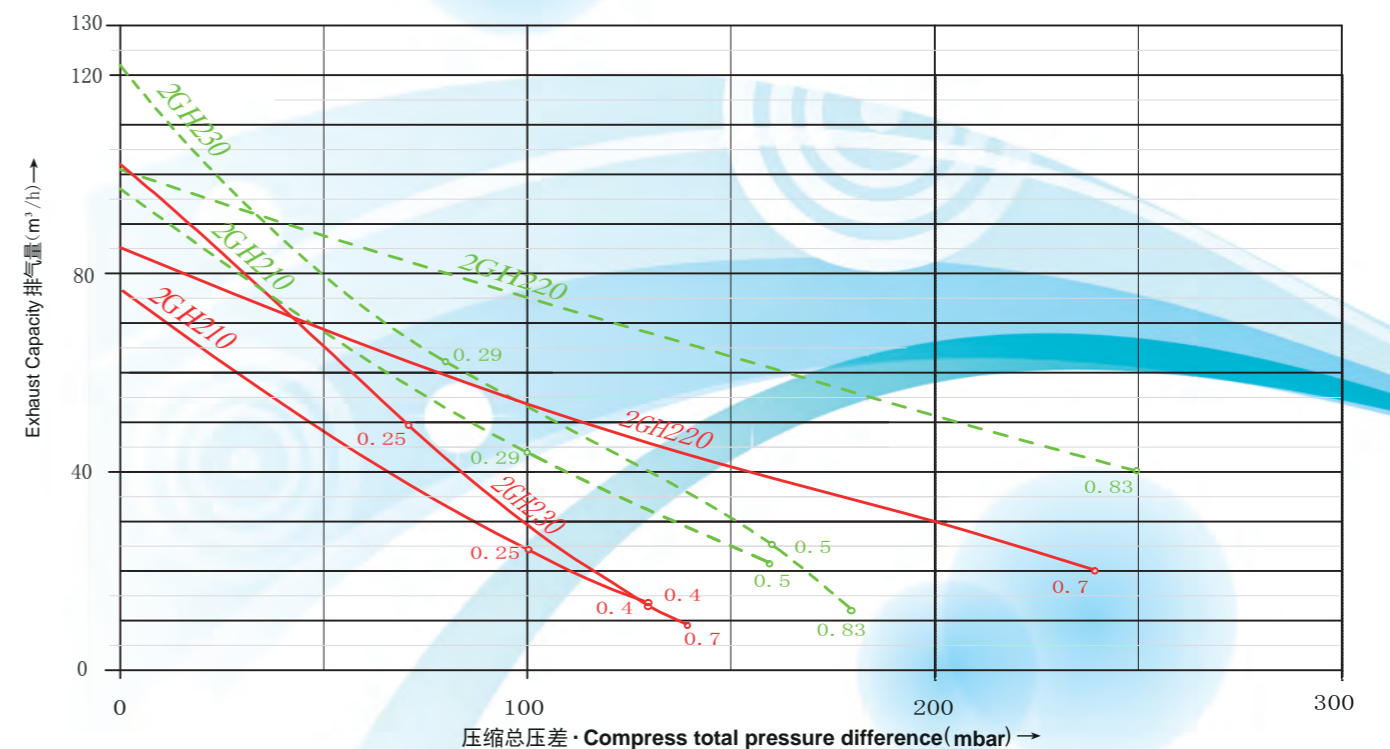
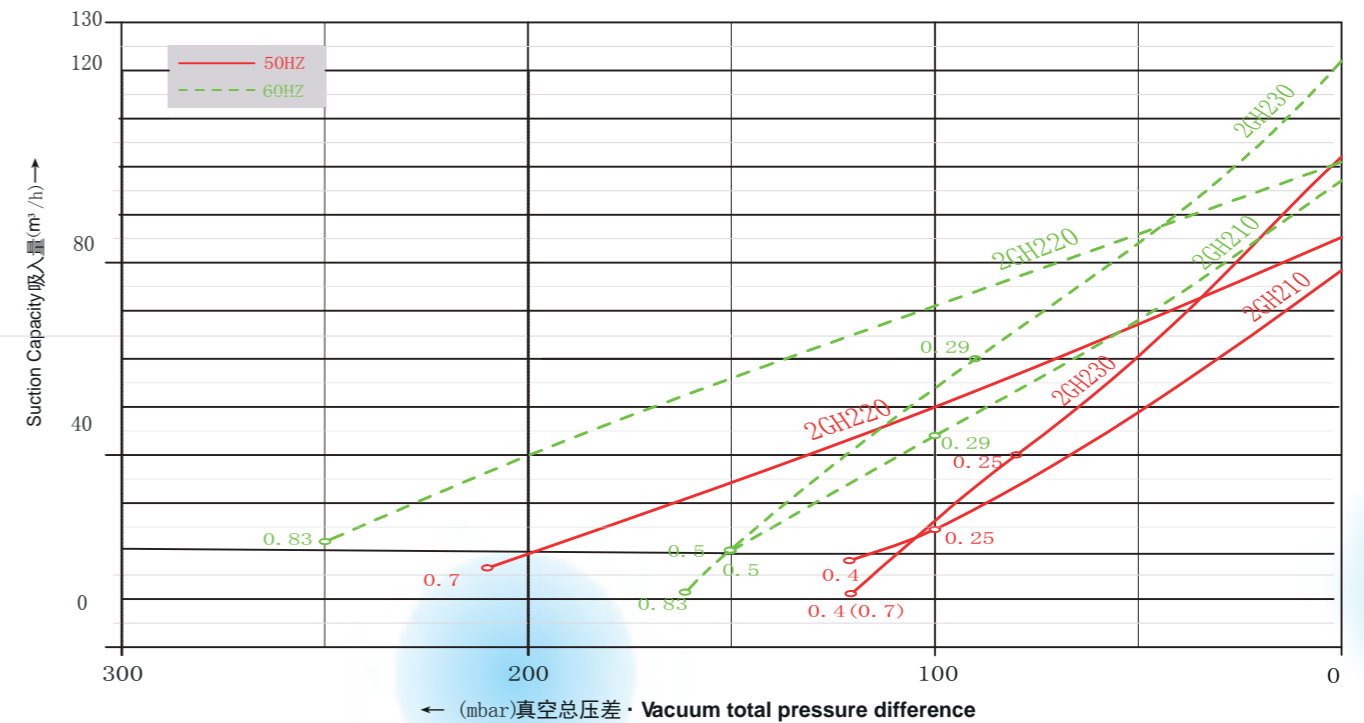


订购型号 Order No.	电机 MOTOR				重量 Weight approx KG	噪音 Sound Pressure level DB(A)	最大流量 Maximum airflow m³/h	最高真空 Maximum Vacuum mbar	最高压力 Maximum pressure mbar	卸压阀 Pressure relief valve 数目×型号 Numbers x type
	频率 Frequency HZ	额定 Rated								
		输出功率 output KW	电压 voltage V	电流 current A						
2GH 210-H06	50	0.25	200-240 Δ/345-415Y	2.1 Δ/1.2Y	9	53	80	-100	100	1 x 2BX2 110/....141
	60	0.29	220-275 Δ/380-480Y	2.0 Δ/1.15Y		56	98	-100	100	1 x 2BX2 114/....142
2GH 210-H16	50	0.4	200-240 Δ/345-415Y	1.85 Δ/1.07Y	10	53	80	-120	130	1 x 2BX2 110/....141
	60	0.5	220-275 Δ/380-480Y	2.3 Δ/1.33Y		56	98	-150	160	1 x 2BX2 114/....142
2GH 220-H26	50	0.7	200-240 Δ/345-415Y	3.07 Δ/1.77Y	15	55	85	-210	240	1 x 2BX2 110/....141
	60	0.83	220-275 Δ/380-480Y	4.16 Δ/2.4Y		61	102	-250	250	1 x 2BX2 114/....142
2GH 230-H06	50	0.25	200-240 Δ/345-415Y	2.1 Δ/1.2Y	10	54	105	-80	70	1 x 2BX2 110/....141
	60	0.29	220-275 Δ/380-480Y	1.7 Δ/1.0Y		57	120	-90	80	1 x 2BX2 114/....142
2GH 230-H16	50	0.4	200-240 Δ/345-415Y	1.85 Δ/1.07Y	11	54	105	-120	130	1 x 2BX2 110/....141
	60	0.5	220-275 Δ/380-480Y	2.3 Δ/1.33Y		57	120	-150	160	1 x 2BX2 114/....142
2GH 230-H26	50	0.7	200-240 Δ/345-415Y	3.07 Δ/1.77Y	12	54	105	-120	140	1 x 2BX2 110/....141
	60	0.83	220-275 Δ/380-480Y	4.16 Δ/2.4Y		57	120	-160	180	1 x 2BX2 114/....142

2GH 2系列 三相电机 / 2GH 2 Three-phase motor

下面的性能曲线是在抽吸15°C空气，排气压力1013mbar的工况下测出的，允差±10%，吸入空气和环境温度不超过25°C时，仍可达到图示总压差。

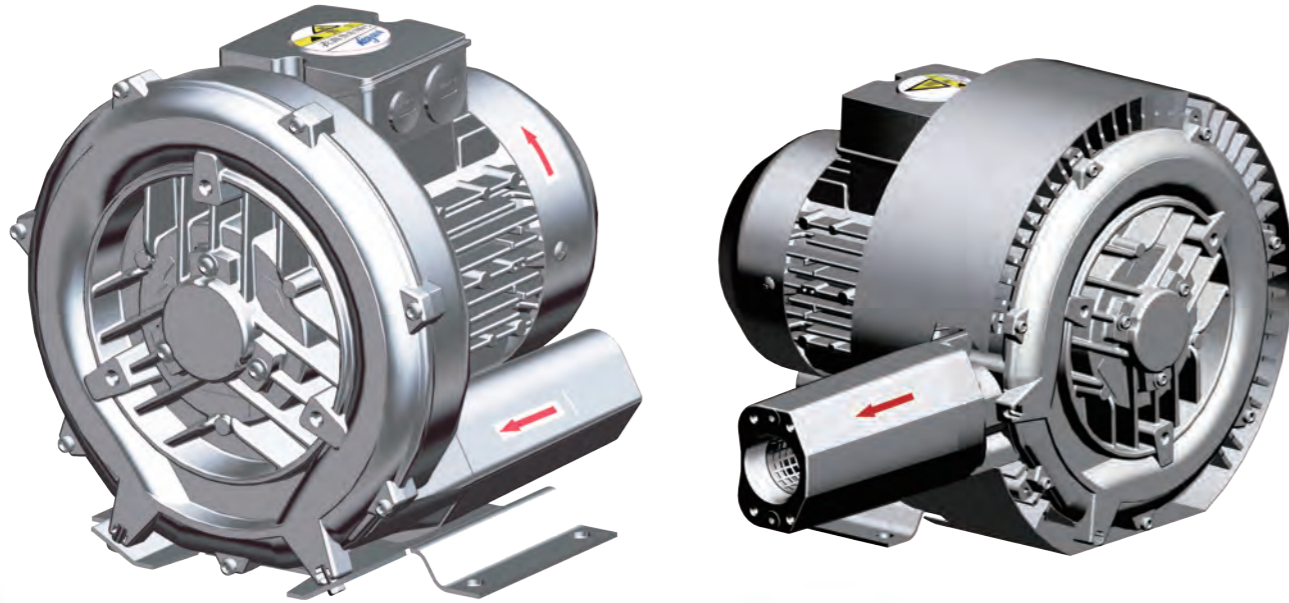
The performance curves are valid for pumping air at 15°C at the inlet flanges with an air pressure of 1013 mbar and atolerance of ±10%. The total pressure differences are valid up to an intake and ambient temperature of 25.



2GH 3系列 三相电机 / 2BH 3 Three-phase motor

气环风机的选型和订购参数

Side channel blower selection and ordering parameters

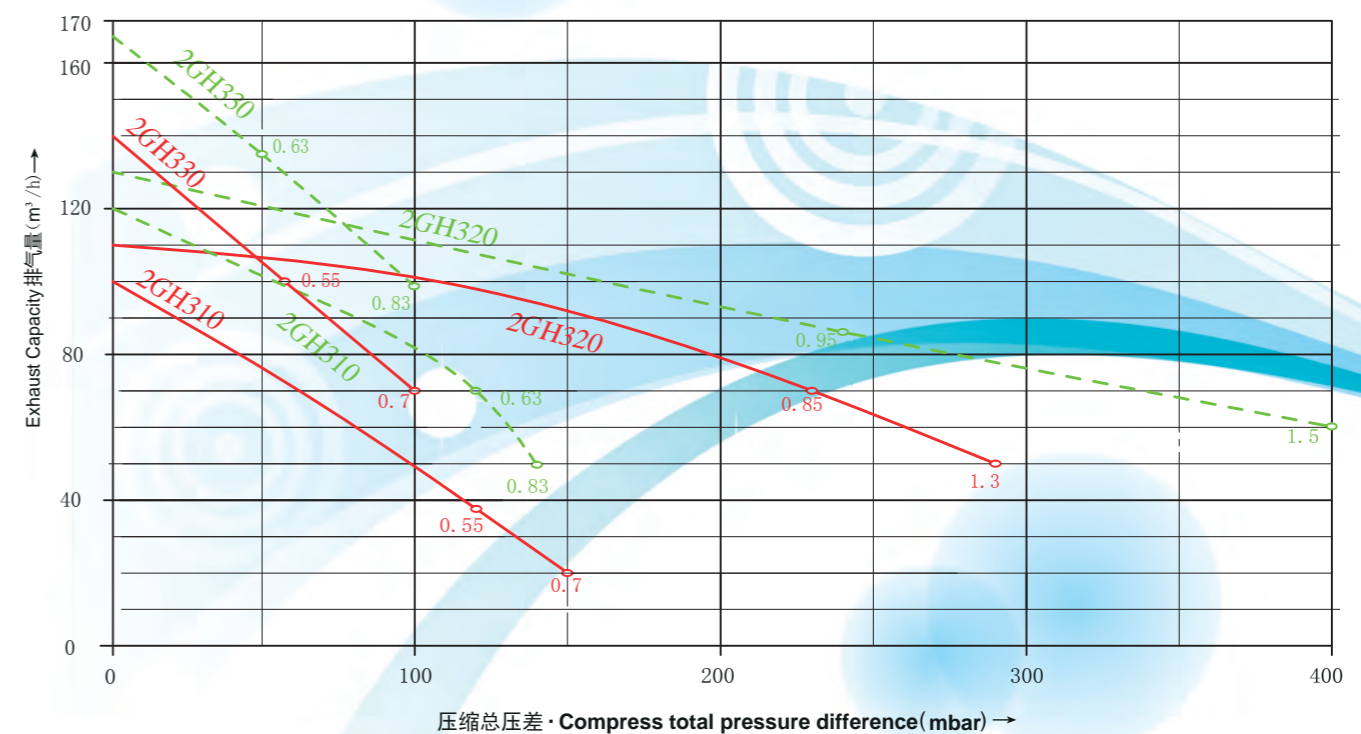
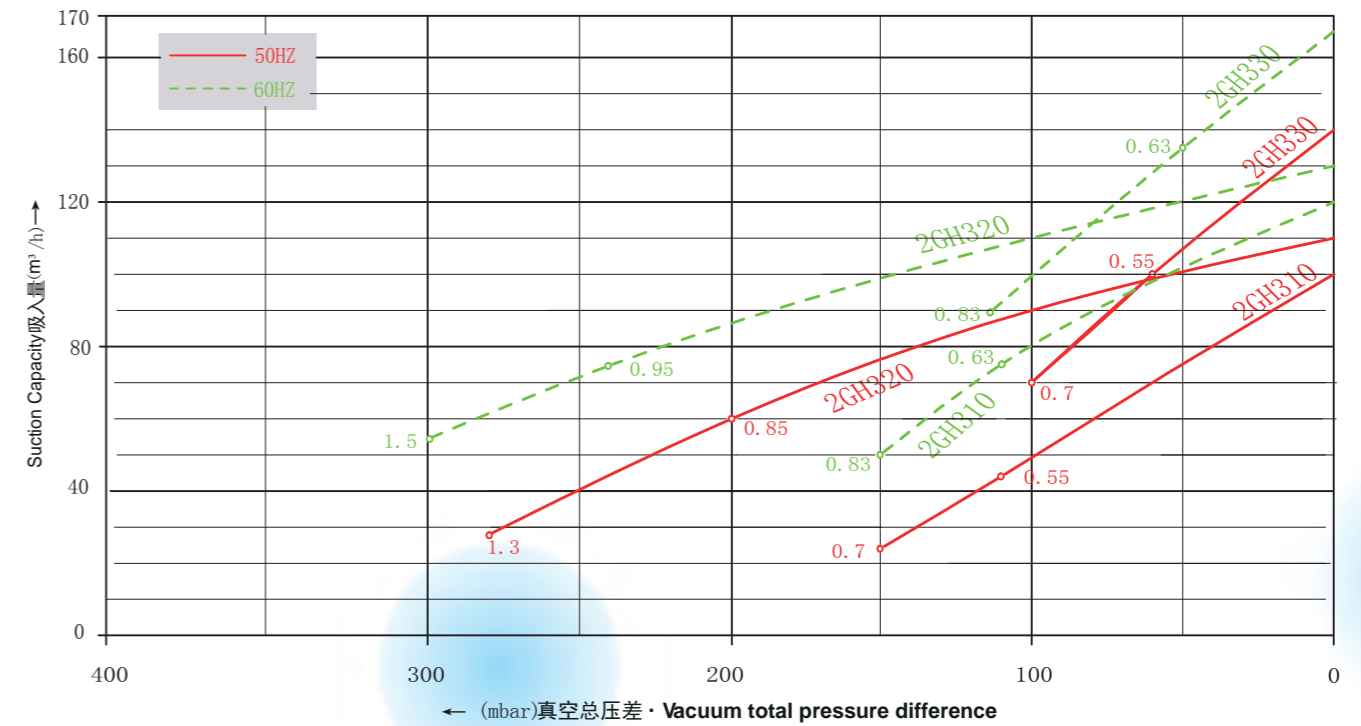


订购型号	电机				重量	噪音	最大流量	最高真空	最高压力	卸压阀
	频率	额定								
		输出功率	电压	电流						
Order No.	Frequency	output	voltage	current	Weight approx	Sound Pressure level	Maximum airflow	Maximum Vacuum	Maximum pressure	Pressure relief valve
	HZ	KW	V	A	KG	dB(A)	m³/h	mbar	mbar	Numbers x type
2GH 310-H06	50	0.55	200-240 Δ/345-415Y	2.42 Δ/1.4Y	11	55	100	-110	120	1 x 2BX2 110/...141
	60	0.63	220-275 Δ/380-480Y	2.91 Δ/1.68Y		57	120	-110	120	
2GH 310-H16	50	0.7	200-240 Δ/345-415Y	3.07 Δ/1.77Y	12	55	100	-150	150	1 x 2BX2 110/...141
	60	0.83	220-275 Δ/380-480Y	4.16 Δ/2.4Y		57	120	-150	140	
2GH 320-H26	50	0.85	200-240 Δ/345-415Y	3.29 Δ/1.9Y	17	58	110	-200	230	1 x 2BX2 110/...141
	60	0.95	220-275 Δ/380-480Y	3.67 Δ/2.12Y		60	130	-240	240	
2GH 320-H36	50	1.3	200-240 Δ/345-415Y	5.02 Δ/2.9Y	18	58	110	-280	290	1 x 2BX2 110/...141
	60	1.5	220-275 Δ/380-480Y	5.89 Δ/3.4Y		60	130	-300	400	
2GH 330-H06	50	0.55	200-240 Δ/345-415Y	2.42 Δ/1.4Y	12	56	140	-60	60	1 x 2BX2 110/...141
	60	0.63	220-275 Δ/380-480Y	2.91 Δ/1.68Y		58	165	-50	50	
2GH 330-H16	50	0.7	200-240 Δ/345-415Y	3.07 Δ/1.77Y	13	56	140	-100	100	1 x 2BX2 110/...141
	60	0.83	220-275 Δ/380-480Y	4.16 Δ/2.4Y		58	165	-115	100	

2GH 3系列 三相电机 / 2BH 3 Three-phase motor

下面的性能曲线是在抽吸15°C空气, 排气压力1013mbar的工况下测出的, 允差±10%, 吸入空气和环境温度不超过25°C时, 仍可达到图示总压差。

The performance curves are valid for pumping air at 15°C at the inlet flanges with an air pressure of 1013 mbar and atolerance of ±10% . The total pressure differences are valid up to an intake and ambient temperatruue of 25 .



2GH 4系列 三相电机 / 2GH 4 Three-phase motor

气环风机的选型和订购参数

Side channel blower selection and ordering parameters

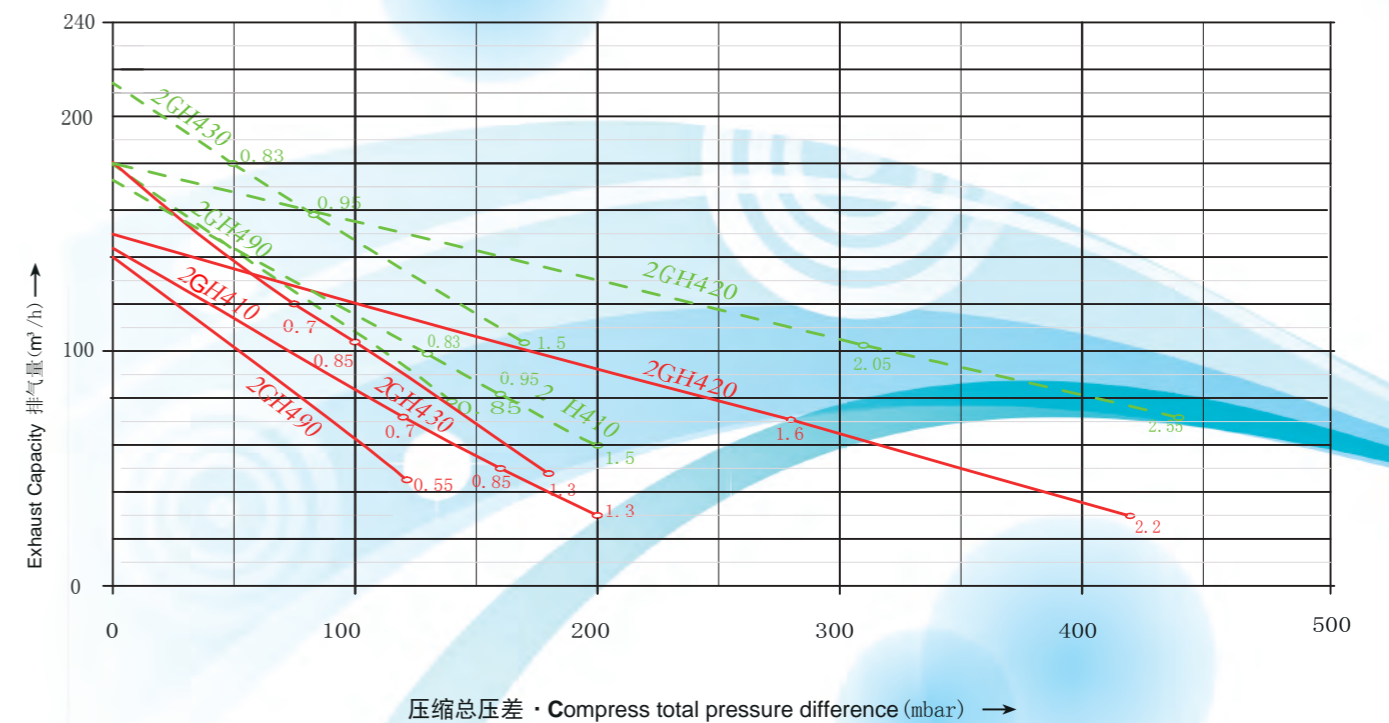
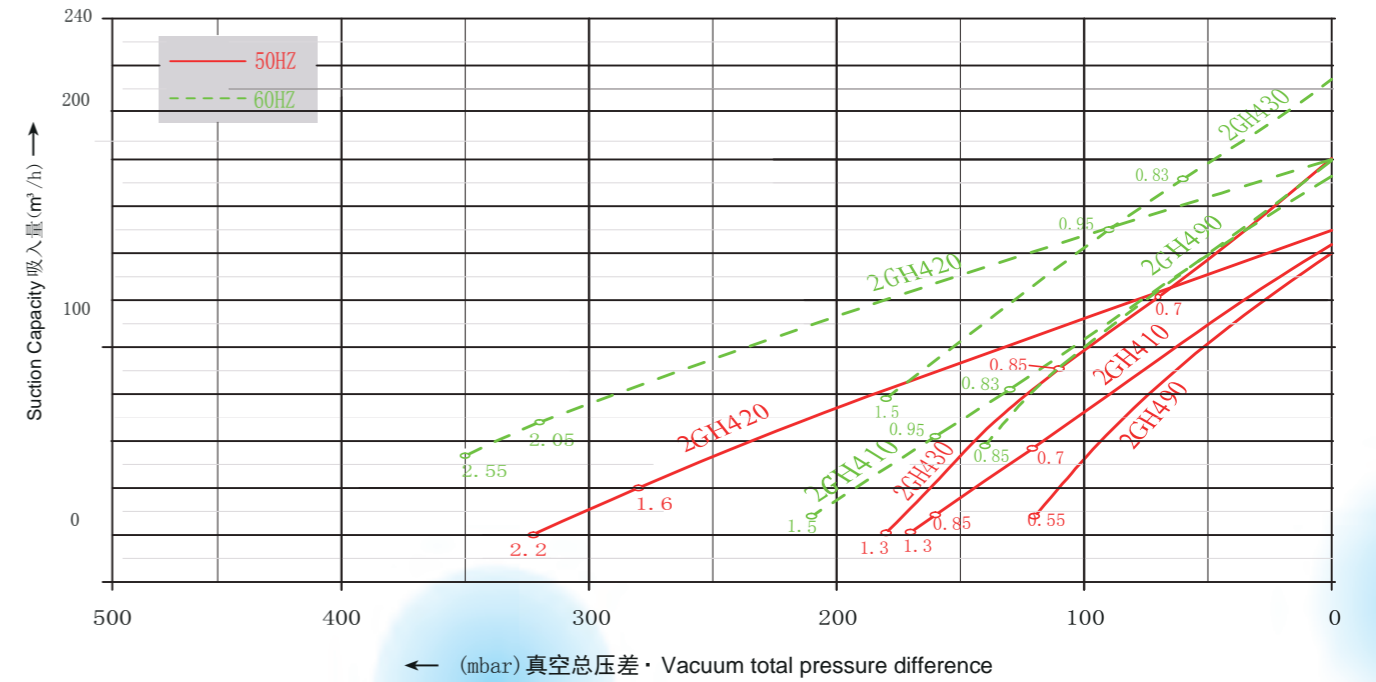


订购型号 Order No.	电机 MOTOR				重量 Weight approx KG	噪音 Sound Pressure level dB(A)	最大流量 Maximum airflow m³/h	最高真空 Maximum Vacuum mbar	最高压力 Maximum pressure mbar	卸压阀 Pressure relief valve Numbers x type
	频率 Frequency HZ	额定 Rated								
		输出功率 output KW	电压 voltage V	电流 current A						
2GH 410-H06	50	0.7	200-240 Δ/345-415Y	3.07 Δ/1.77Y	13	63	145	-120	120	1x2BX2 110/....141
	60	0.83	220-275 Δ/380-480Y	4.16 Δ/2.4Y		64	175	-130	130	1x2BX2 114/....142
2GH 410-H16	50	0.85	200-240 Δ/345-415Y	3.29 Δ/1.9Y	16	63	145	-160	160	1x2BX2 110/....141
	60	0.95	220-275 Δ/380-480Y	3.67 Δ/2.12Y		64	175	-160	160	1x2BX2 114/....142
2GH 410-H26	50	1.3	200-240 Δ/345-415Y	5.02 Δ/2.9Y	17	63	145	-170	200	1x2BX2 110/....141
	60	1.5	220-275 Δ/380-480Y	5.89 Δ/3.4Y		64	175	-210	220	1x2BX2 114/....142
2GH 420-H36	50	1.6	200-240 Δ/345-415Y	6.24 Δ/3.6Y	25	66	150	-280	280	1x2BX2 110/....141
	60	2.05	220-275 Δ/380-480Y	7.97 Δ/4.6Y		69	180	-320	310	1x2BX2 114/....142
2GH 420-H46	50	2.2	200-240 Δ/345-415Y	8.14 Δ/4.7Y	27	66	150	-320	420	1x2BX2 110/....141
	60	2.55	220-275 Δ/380-480Y	9.21 Δ/5.32Y		69	180	-350	440	1x2BX2 114/....142
2GH 430-H06	50	0.7	200-240 Δ/345-415Y	3.07 Δ/1.77Y	14	64	180	-70	70	1x2BX2 110/....141
	60	0.83	220-275 Δ/380-480Y	4.16 Δ/2.4Y		65	210	-60	50	2x2BX2 114/....142
2GH 430-H16	50	0.85	200-240 Δ/345-415Y	3.29 Δ/1.9Y	17	64	180	-110	100	1x2BX2 110/....141
	60	0.95	220-275 Δ/380-480Y	3.67 Δ/2.12Y		65	210	-90	80	2x2BX2 114/....142
2GH 430-H26	50	1.3	200-240 Δ/345-415Y	5.02 Δ/2.9Y	18	64	180	-180	180	1x2BX2 110/....141
	60	1.5	220-275 Δ/380-480Y	5.89 Δ/3.4Y		65	210	-180	170	1x2BX2 114/....142
2GH 490-H16	50	0.55	200-240 Δ/345-415Y	2.5 Δ/1.4Y	14	63	140	-120	120	—
	60	0.75	220-275 Δ/380-480Y	2.7 Δ/1.6Y		64	175	-140	140	—

2GH 4 三相电机 / 2BH4 Three-phase motor

下面的性能曲线是在抽吸15°C空气，排气压力1013mbar的工况下测出的，允差±10%，吸入空气和环境温度不超过 25°C时，仍可达到图示总压差。

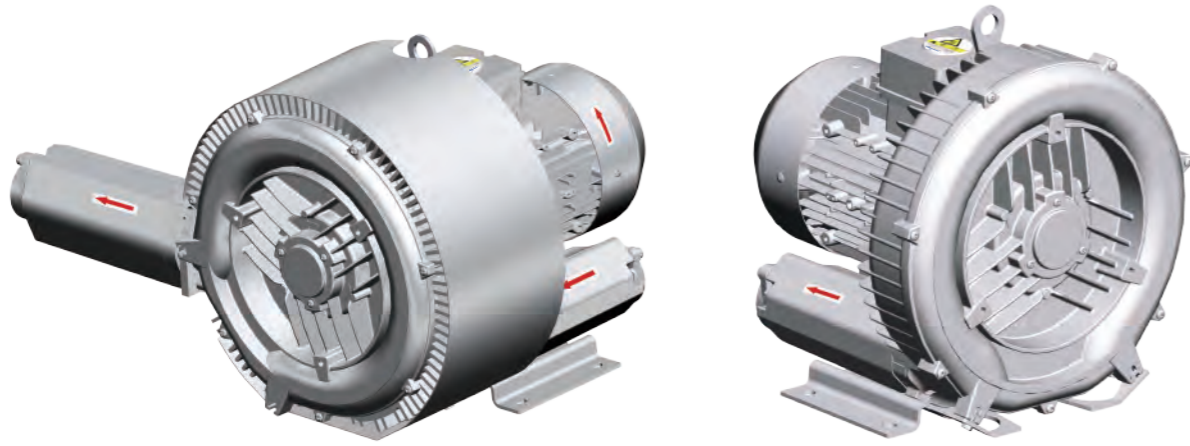
The performance curves are valid for pumping air at 15°C at the inlet flanges with an air pressure of 1013 mbar and atolerance of ±10%.The total pressure differences are valid up to an intake and ambient tempratruue of 25 .



2GH 5系列 三相电机 / 2GH5 Three-phase motor

气环风机的选型和订购参数

Side channel blower selection and ordering parameters

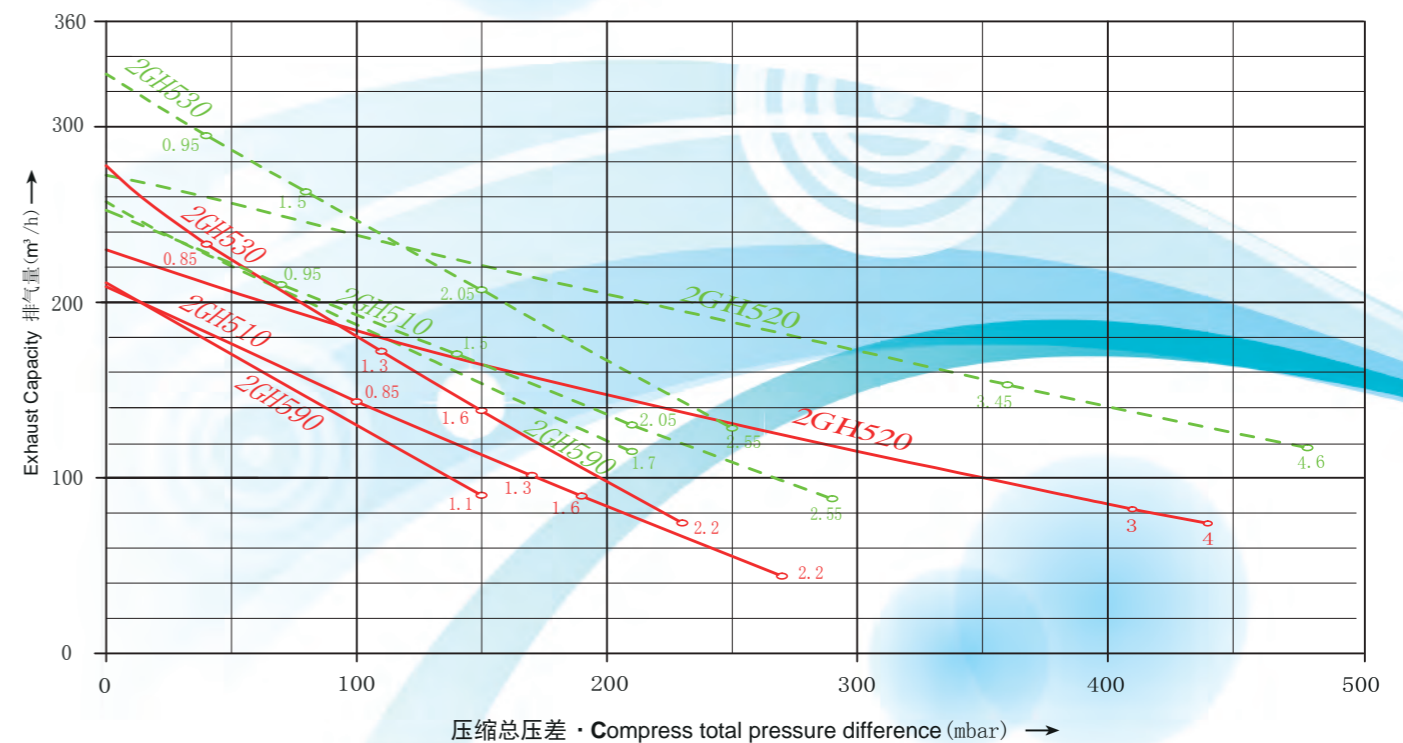
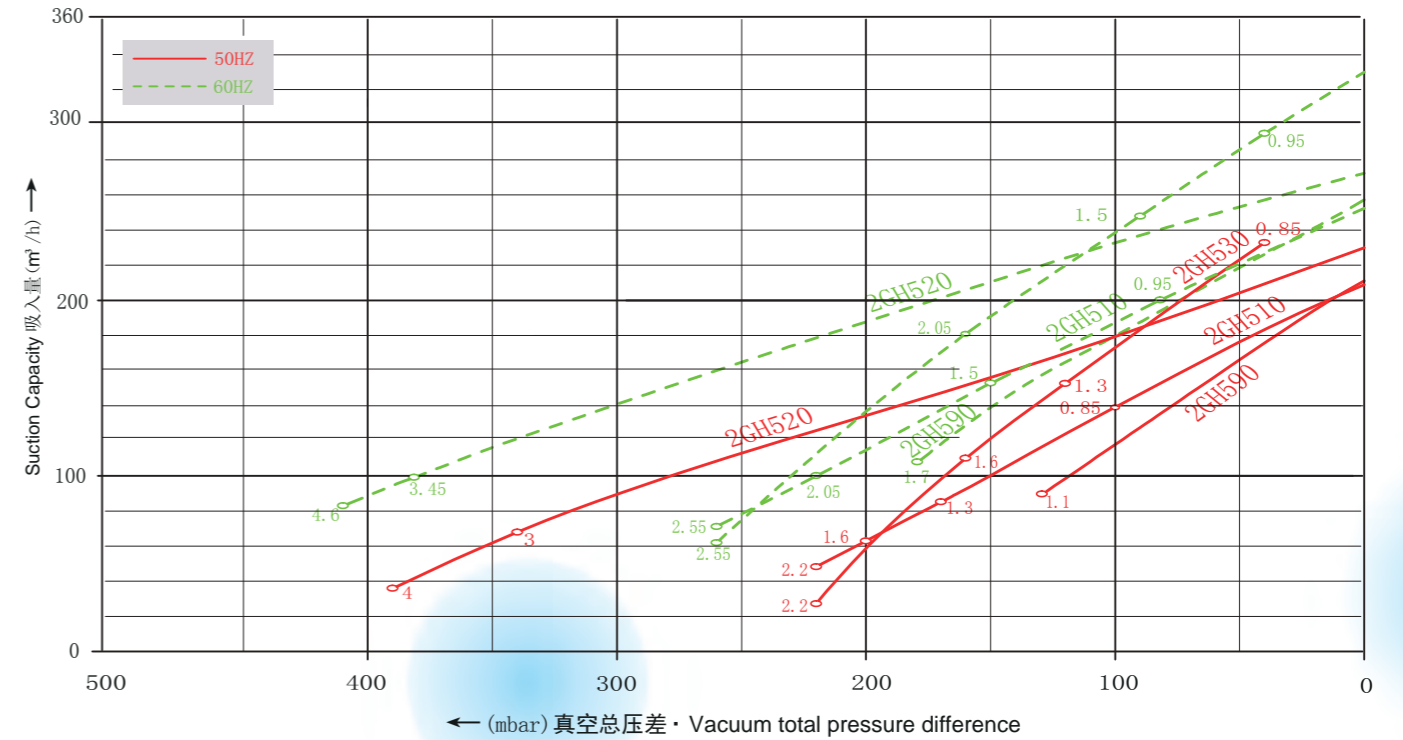


订购型号 Order No.	电机 MOTOR				重量 Weight approx KG	噪音 Sound Pressure level dB(A)	最大流量 Maximum airflow m³/h	最高真空 Maximum Vacuum mbar	最高压力 Maximum pressure mbar	卸压阀 Pressure relief valve 数目×型号 Numbers x type
	频率 Frequency HZ	额定 Rated								
		输出功率 output KW	电压 voltage V	电流 current A						
2GH 510-H06	50	0.85	200-240 Δ/345-415Y	3.29 Δ/1.9Y	20	64	210	-100	100	1 x 2BX2 110/....145
	60	0.95	220-275 Δ/380-480Y	3.67 Δ/2.12Y		70	255	-80	70	
2GH 510-H16	50	1.3	200-240 Δ/345-415Y	5.02 Δ/2.9Y	22	64	210	-170	170	1 x 2BX2 110/....145
	60	1.5	220-275 Δ/380-480Y	5.89 Δ/3.4Y		70	255	-150	140	
2GH 510-H26	50	1.6	200-240 Δ/345-415Y	6.24 Δ/3.6Y	23	64	210	-200	190	1 x 2BX2 110/....145
	60	2.05	220-275 Δ/380-480Y	7.97 Δ/4.6Y		70	255	-220	210	
2GH 510-H36	50	2.2	200-240 Δ/345-415Y	8.14 Δ/4.7Y	25	64	210	-220	270	1 x 2BX2 110/....145
	60	2.55	220-275 Δ/380-480Y	9.21 Δ/5.32Y		70	255	-260	290	
2GH 520-H46	50	3.0	200-240 Δ/345-415Y	10.46 Δ/6.04Y	40	72	230	-340	410	1 x 2BX2 110/....145
	60	3.45	220-275 Δ/380-480Y	12.04 Δ/6.95Y		74	275	-380	360	
2GH 520-H57	50	4.0	345-415 Δ/600-520Y	8.05 Δ/4.65Y	41	72	230	-390	440	1 x 2BX2 110/....145
	60	4.6	380-480 Δ/660-520Y	9.26 Δ/5.35Y		74	275	-410	480	
2GH 530-H06	50	0.85	200-240 Δ/345-415Y	3.29 Δ/1.9Y	21	65	270	-40	40	1 x 2BX2 110/....145
	60	0.95	220-275 Δ/380-480Y	3.67 Δ/2.12Y		71	330	-40	40	
2GH 530-H16	50	1.3	200-240 Δ/345-415Y	5.02 Δ/2.9Y	23	65	270	-120	110	1 x 2BX2 110/....145
	60	1.5	220-275 Δ/380-480Y	5.89 Δ/3.4Y		71	330	-90	80	
2GH 530-H26	50	1.6	200-240 Δ/345-415Y	6.24 Δ/3.6Y	24	65	270	-160	150	1 x 2BX2 110/....145
	60	2.05	220-275 Δ/380-480Y	7.97 Δ/4.6Y		71	330	-160	150	
2GH 530-H36	50	2.2	200-240 Δ/345-415Y	8.14 Δ/4.7Y	26	65	270	-220	230	1 x 2BX2 110/....145
	60	2.55	220-275 Δ/380-480Y	9.21 Δ/5.32Y		71	330	-260	250	
2GH 590-H26	50	1.1	200-240 Δ/345-415Y	5.7 Δ/3.3Y	23	64	210	-130	150	—
	60	1.7	220-275 Δ/380-480Y	6.0 Δ/3.5Y		70	255	-180	210	

2GH 5系列 三相电机 / 2GH5 Three-phase motor

下面的性能曲线是在抽吸15°C空气，排气压力1013mbar的工况下测出的，允差±10%，吸入空气和环境温度不超过 25°C时，仍可达到图示总压差。

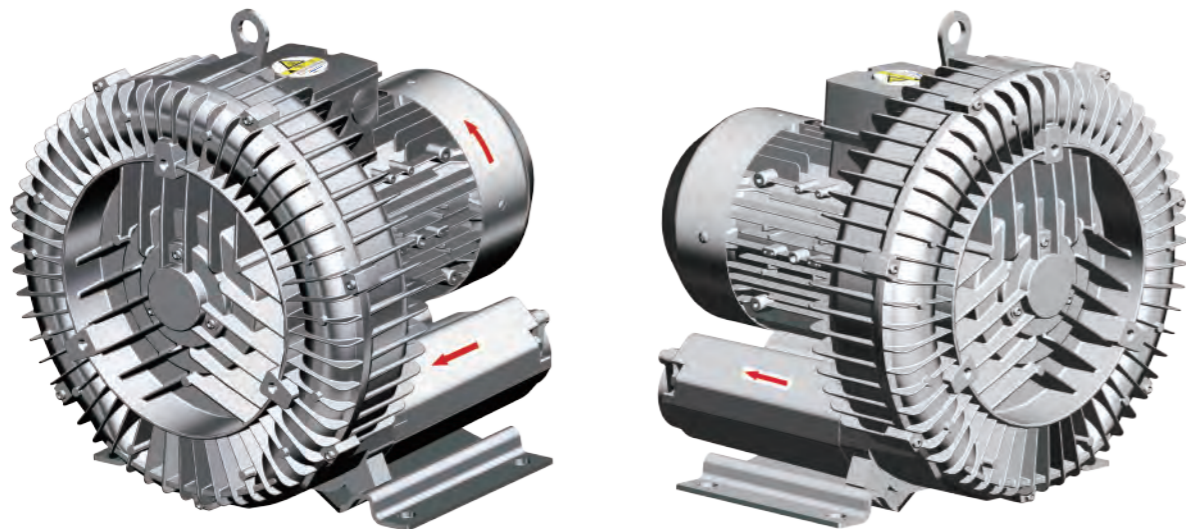
The performance curves are valid for pumping air at 15°C at the inlet flanges with an air pressure of 1013 mbar and atolerance of ±10%.The total pressure differences are valid up to an intake and ambient temprature of 25 .



2GH 6系列 三相电机 / 2GH 6 Three-phase motor

气环风机的选型和订购参数

Side channel blower selection and ordering parameters

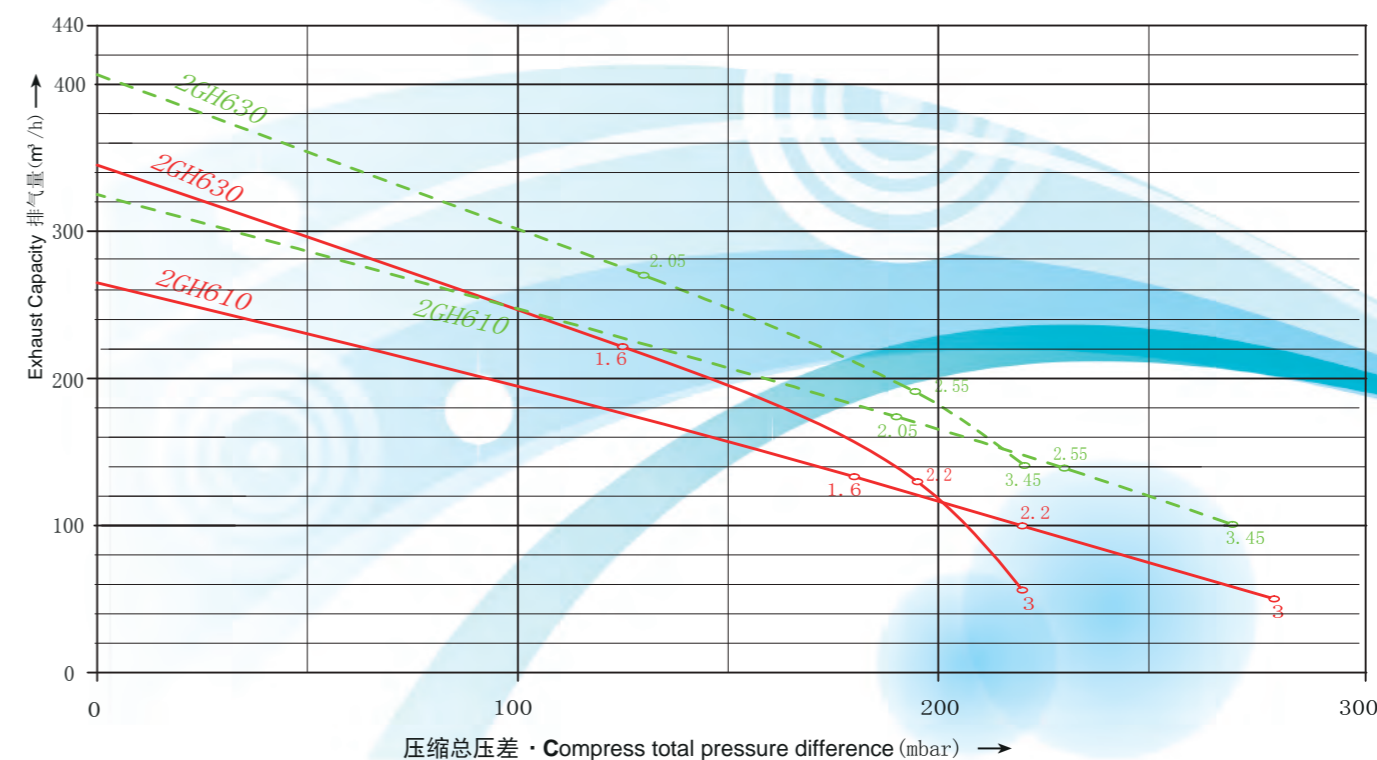
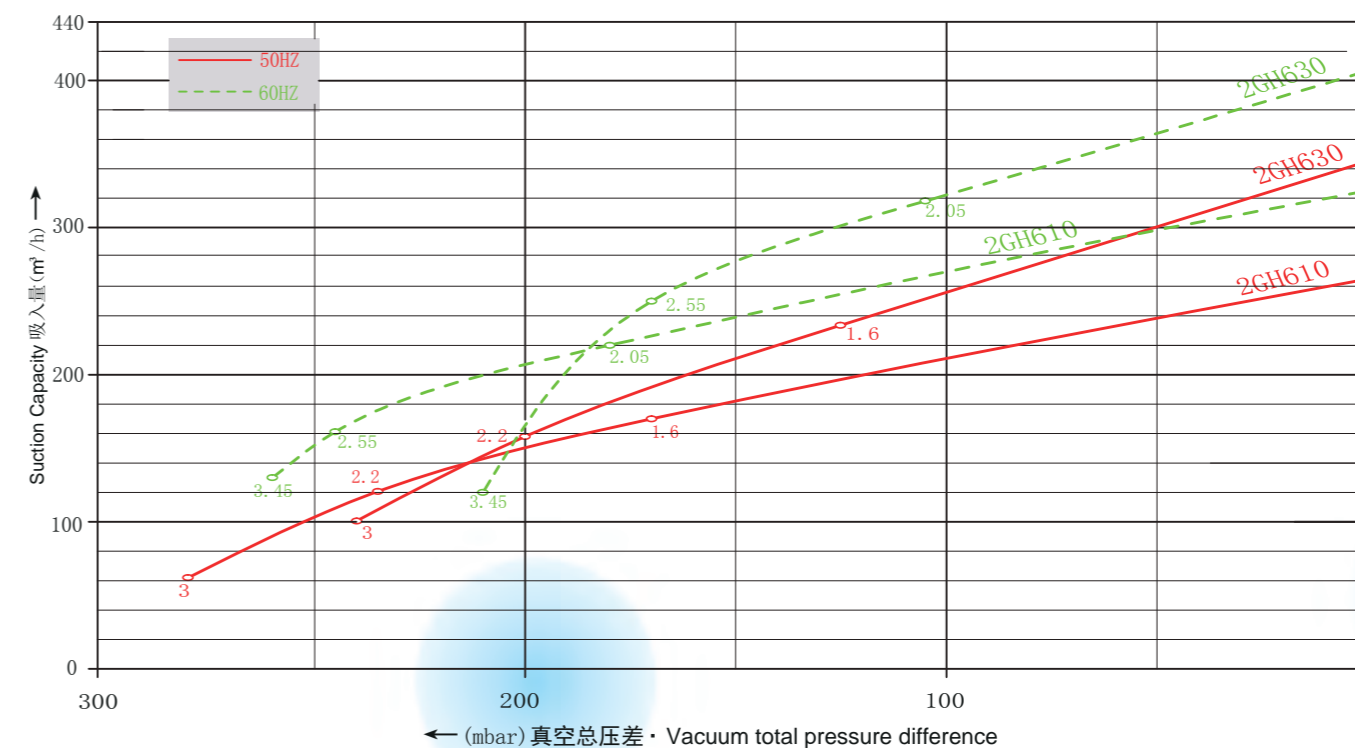


订购型号	频率	电机			重量	噪音	最大流量	最高真空	最高压力	卸压阀
		输出功率	电压	电流						
Order No.	Frequency	output	voltage	current	Weight approx	Sound Pressure level	Maximum airflow	Maximum Vacuum	Maximum pressure	Pressure relief valve
	HZ	KW	V	A	KG	dB(A)	m³/h	mbar	mbar	Numbersxtype
2GH 610-H06	50	1.6	200-240△/345-415Y	6.24△/3.6Y	25	68	265	170	180	1x2BX2 110/...145
	60	2.05	220-275△/380-480Y	7.97△/4.6Y		70	315	180	190	1x2BX2 114/...146
2GH 610-H16	50	2.2	200-240△/345-415Y	8.14△/4.7Y	28	69	265	235	220	1x2BX2 110/...145
	60	2.55	220-275△/380-480Y	9.21△/5.32Y		72	315	245	230	1x2BX2 114/...146
2GH 610-H26	50	3.0	200-240△/345-415Y	10.46△/6.04Y	34	69	265	280	280	1x2BX2 110/...145
	60	3.45	220-275△/380-480Y	12.04△/6.95Y		72	315	260	270	1x2BX2 114/...146
2GH 630-H06	50	1.6	200-240△/345-415Y	6.24△/3.6Y	26	70	345	125	125	1x2BX2 110/...145
	60	2.05	220-275△/380-480Y	7.97△/4.6Y		73	415	105	130	1x2BX2 114/...146
2GH 630-H16	50	2.2	200-240△/345-415Y	8.14△/4.7Y	29	70	345	200	195	1x2BX2 110/...145
	60	2.55	220-275△/380-480Y	9.21△/5.32Y		73	415	170	195	1x2BX2 114/...146
2GH 630-H26	50	3.0	200-240△/345-415Y	10.46△/6.04Y	35	70	345	240	220	1x2BX2 110/...145
	60	3.45	220-275△/380-480Y	12.04△/6.95Y		73	415	210	220	1x2BX2 114/ 146

2GH 6系列 三相电机 / 2GH 6 Three-phase motor

下面的性能曲线是在抽吸15°C空气，排气压力1013mbar的工况下测出的，允差±10%，吸入空气和环境温度不超过 25°C时，仍可达到图示总压差。

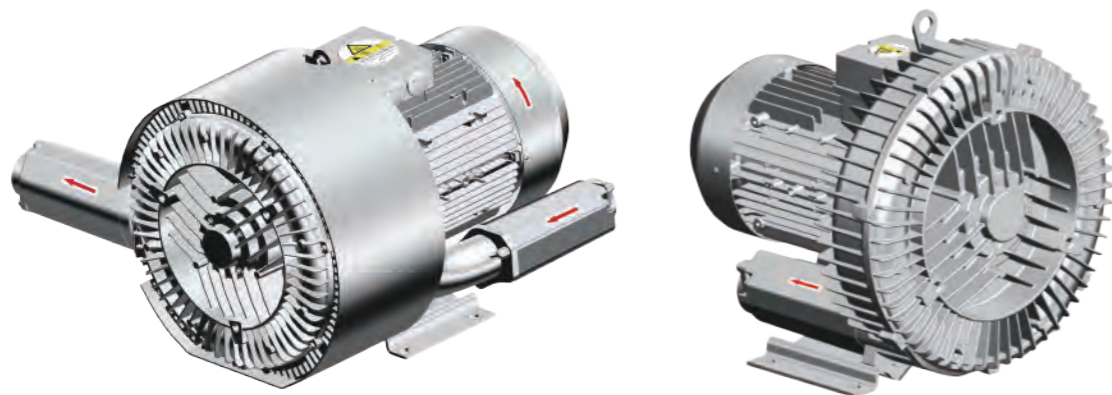
The performance curves are valid for pumping air at 15°C at the inlet flanges with an air pressure of 1013 mbar and atolerance of ±10%.The total pressure differences are valid up to an intake and ambient temprature of 25 .



2GH 7系列 三相电机 / 2GH7 Three-phase motor

气环风机的选型和订购参数

Side channel blower selection and ordering parameters

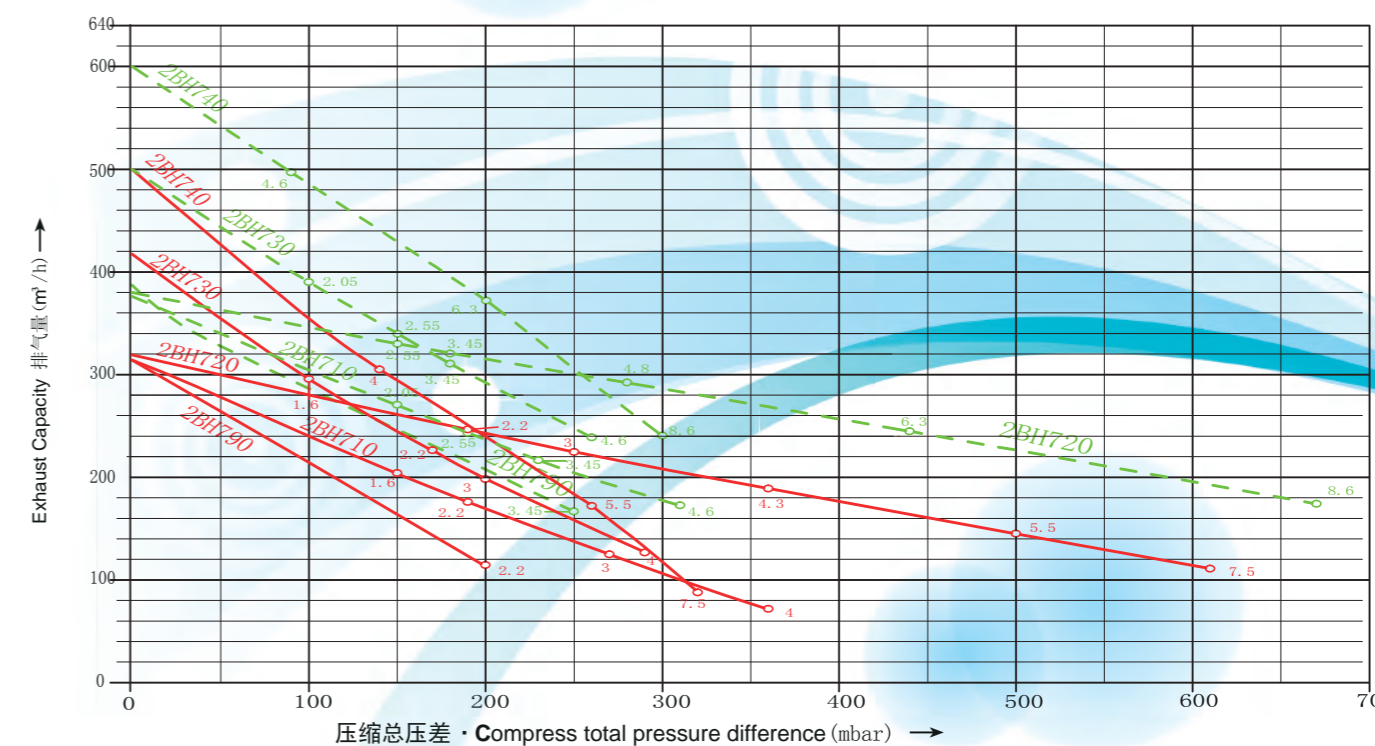
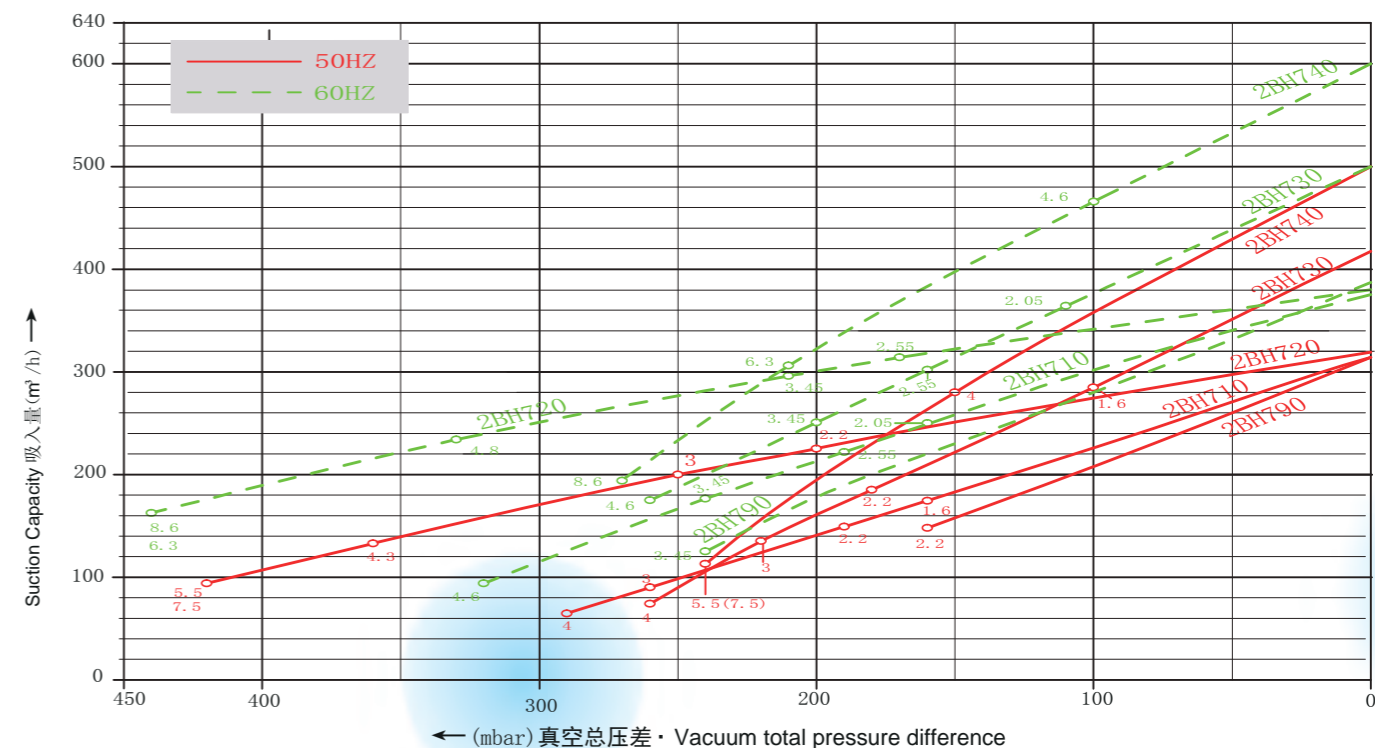


订购型号 Order No.	频率 Frequency	电机 MOTOR			重量 weight approx KG	噪音 Sound pressure level dB(A)	最大流量 Maximum airflow m³/h	最高真空 Maximum Vacuum mbar	最高压力 Maximum pressure mbar	卸压阀 Pressure relief valve Number × type
		额定 Rated								
		输出功率 output KW	电压 voltage V	电流 current A						
2GH 710-H06	50	1.6	200-240Δ/345-415Y	6.24 Δ/3.6Y	27	318	-160	150	1x2BX2 110/...145	
	60	2.05	220-275Δ/380-480Y	7.97 Δ/4.6Y		376	-160	150	1x2BX2 114/...146	
2GH 710-H16	50	2.2	200-240Δ/345-415Y	8.14 Δ/4.7Y	30	318	-190	190	1x2BX2 110/...145	
	60	2.55	220-275Δ/380-480Y	9.21 Δ/5.32Y		376	-190	190	1x2BX2 114/...146	
2GH 710-H26	50	3.0	200-240Δ/345-415Y	10.46 Δ/6.04Y	36	318	-260	270	1x2BX2 110/...145	
	60	3.45	220-275Δ/380-480Y	12.04 Δ/6.95Y		376	-240	230	1x2BX2 114/...146	
2GH 710-H37	50	4.0	345-415Δ/600-720Y	8.05 Δ/4.65Y	40	318	-290	360	1x2BX2 110/...145	
	60	4.6	380-480Δ/660-720Y	9.26 Δ/5.35Y		376	-320	310	1x2BX2 114/...146	
2GH 720-H16	50	2.2	200-240Δ/345-415Y	8.14 Δ/4.7Y	43	320	-200	190	1x2BX2 110/...145	
	60	2.55	220-275Δ/380-480Y	9.21 Δ/5.32Y		380	-170	150	2x2BX2 114/...146	
2GH 720-H26	50	3.0	200-240Δ/345-415Y	10.46 Δ/6.04Y	48	320	-250	250	1x2BX2 110/...145	
	60	3.45	220-275Δ/380-480Y	12.04 Δ/6.95Y		380	-210	180	2x2BX2 114/...146	
2GH 720-H37	50	4.3	345-415Δ/600-720Y	10.0 Δ/5.2Y	54	320	-360	360	1x2BX2 110/...145	
	60	4.8	380-480Δ/660-720Y	10.4 Δ/6.0Y		380	-330	330	1x2BX2 114/...146	
2GH 720-H47	50	5.5	345-415Δ/600-720Y	10.7 Δ/6.18Y	66	320	-420	500	1x2BX2 110/...145	
	60	6.3	380-480Δ/660-720Y	12.3 Δ/7.1Y		380	-440	440	1x2BX2 114/...146	
2GH 720-H57	50	7.5	345-415Δ/600-720Y	14.3 Δ/8.26Y	73	320	-420	610	1x2BX2 110/...145	
	60	8.6	380-480Δ/660-720Y	16.7 Δ/9.64Y		380	-440	670	1x2BX2 114/...146	
2GH 730-H06	50	1.6	200-240Δ/345-415Y	6.24 Δ/3.6Y	29	420	-100	100	3x2BX2 114/...146	
	60	2.05	220-275Δ/380-480Y	7.97 Δ/4.6Y		500	-110	100		
2GH 730-H16	50	2.2	200-240Δ/345-415Y	8.14 Δ/4.7Y	32	420	-180	170	1x2BX2 110/...145	
	60	2.55	220-275Δ/380-480Y	9.21 Δ/5.32Y		500	-160	150	2x2BX2 114/...146	
2GH 730-H26	50	3.0	200-240Δ/345-415Y	10.46 Δ/6.04Y	37	420	-220	200	1x2BX2 110/...145	
	60	3.45	220-275Δ/380-480Y	12.04 Δ/6.95Y		500	-200	180	2x2BX2 114/...146	
2GH 730-H37	50	4.0	345-415Δ/600-720Y	8.05 Δ/4.65Y	43	420	-260	290	1x2BX2 110/...145	
	60	4.6	380-480Δ/660-720Y	9.26 Δ/5.35Y		500	-260	260	2x2BX2 114/...146	
2GH 740-H37	50	4.0	345-415Δ/600-720Y	8.05 Δ/4.65Y	54	500	-150	140	1x2BX2 110/...145	
	60	4.6	380-480Δ/660-720Y	9.26 Δ/5.35Y		600	-100	90	2x2BX2 114/...146	
2GH 740-H47	50	5.5	345-415Δ/600-720Y	10.7 Δ/6.18Y	69	500	-240	260	1x2BX2 110/...145	
	60	6.3	380-480Δ/660-720Y	12.3 Δ/7.1Y		600	-210	200	2x2BX2 114/...146	
2GH 740-H57	50	7.5	345-415Δ/600-720Y	14.3 Δ/8.26Y	75	500	-240	320	1x2BX2 110/...145	
	60	8.6	380-480Δ/660-720Y	16.7 Δ/9.64Y		600	-270	300	1x2BX2 114/...146	
2GH 790-H26	50	2.2	200-240Δ/345-415Y	10.46 Δ/6.04Y	36	320	-160	200	—	
	60	3.45	220-275Δ/380-480Y	12.04 Δ/6.95Y		370	-240	250	—	

2GH 7 系列 三相电机 / 2BH7 Three-phase motor

下面的性能曲线是在抽吸15°C空气，排气压力1013mbar的工况下测出的，允差±10%，吸入空气和环境温度不超过 25°C时，仍可达到图示总压差。

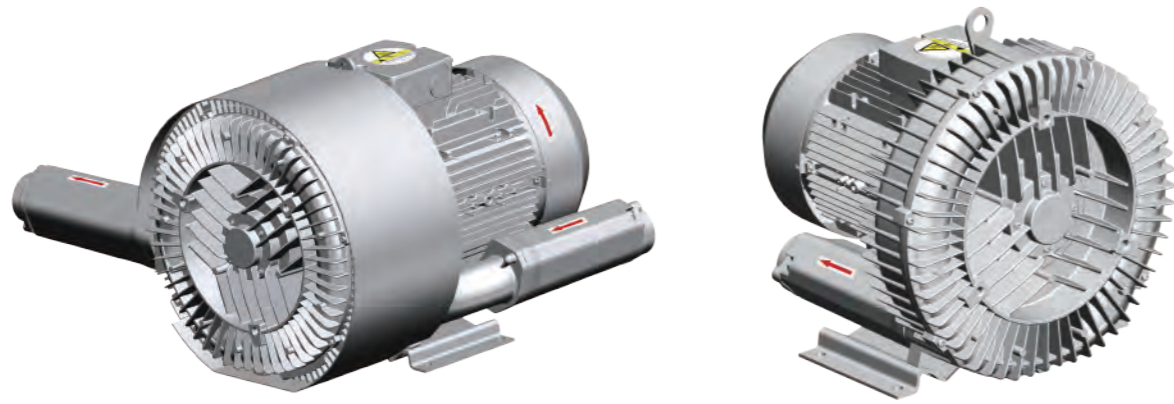
The performance curves are valid for pumping air at 15°C at the inlet flanges with an air pressure of 1013 mbar and atolerance of ±10%.The total pressure differences are valid up to an intake and ambient temprature of 25 .



2GH 8系列 三相电机 / 2BH8 Three-phase motor

气环风机的选型和订购参数

Side channel blower selection and ordering parameters

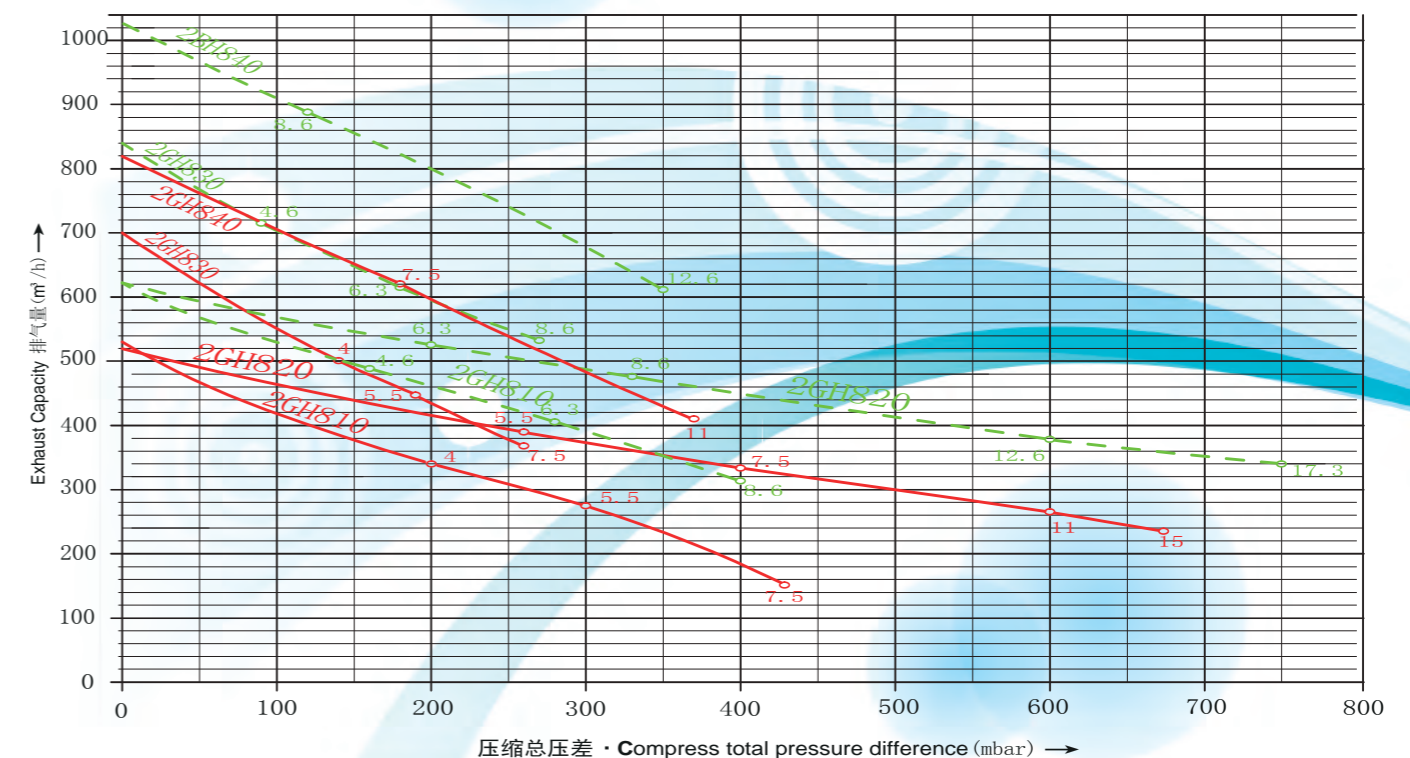
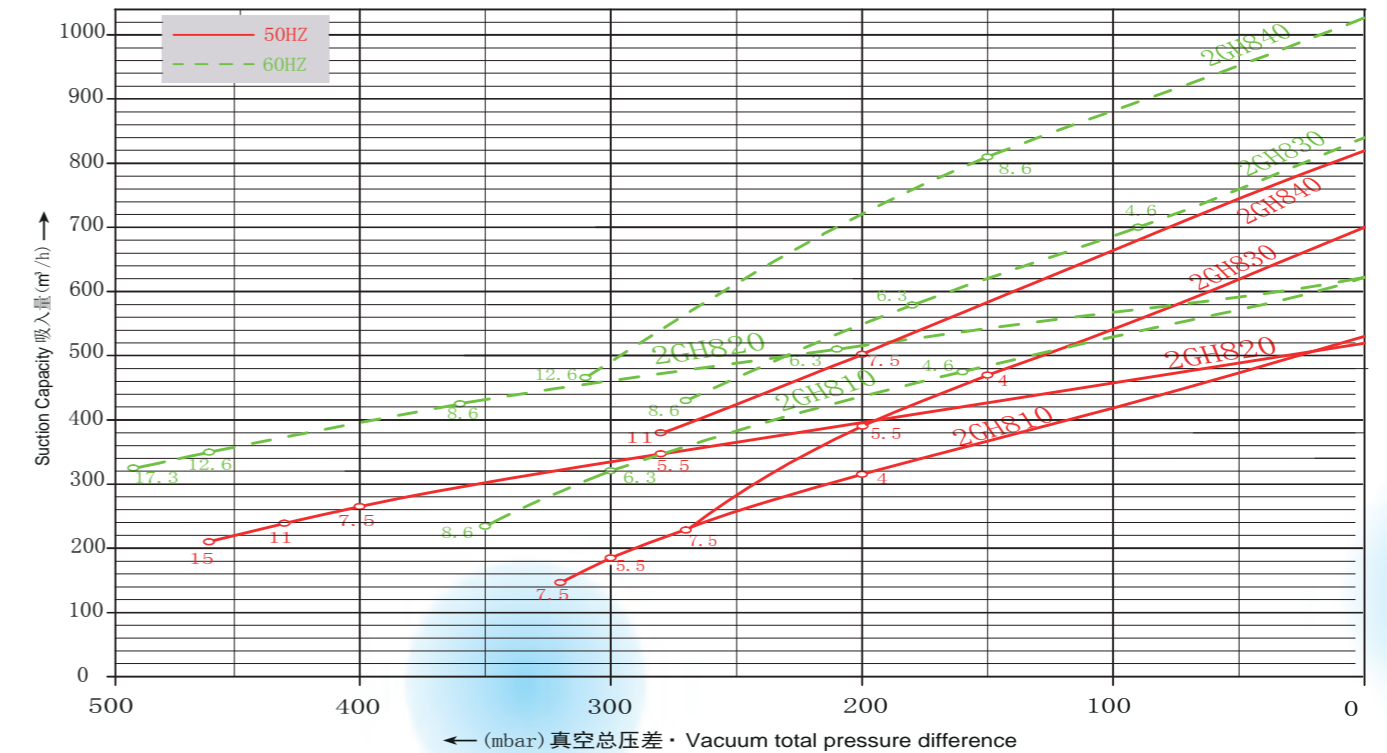


订购型号	电机				重量	噪音	最大流量	最高真空	最高压力	卸压阀
	频率	额定								
Order No.	Frequency	输出功率	电压	电流	Weight approx	Sound Pressure level	Maximum airflow	Maximum Vacuum	Maximum pressure	Pressure relief valve
		output	voltage	current						
	HZ	KW	V	A	KG	dB(A)	m ³ /h	mbar	mbar	
2GH 810-H07	50	4.0	345-415△/600-720Y	8.05△/4.65Y	54	70	530	-200	200	1x2BX4 740/...840
	60	4.6	380-480△/660-720Y	9.26△/5.35Y		74	620	-160	160	
2GH 810-H17	50	5.5	345-415△/600-720Y	10.7△/6.18Y	63	70	530	-300	300	1x2BX4 740/...840
	60	6.3	380-480△/660-720Y	12.3△/7.1Y		74	620	-300	280	
2GH 810-H27	50	7.5	345-415△/600-720Y	14.3△/8.26Y	66	70	530	-320	430	1x2BX4 740/...840
	60	8.6	380-480△/660-720Y	16.7△/9.64Y		74	620	-350	400	
2GH 820-H17	50	5.5	345-415△/600-720Y	10.7△/6.18Y	83	74	520	-280	260	1x2BX4 740/...840
	60	6.3	380-480△/660-720Y	12.3△/7.1Y		78	620	-210	200	
2GH 820-H27	50	7.5	345-415△/600-720Y	14.3△/8.26Y	86	74	520	-400	400	1x2BX4 740/...840
	60	8.6	380-480△/660-720Y	16.7△/9.64Y		78	620	-360	330	
2GH 820-H37	50	11.0	345-415△/600-720Y	20.8△/12.1Y	104	74	520	-430	600	1x2BX4 740/...840
	60	12.6	380-480△/660-720Y	23.8△/13.74Y		78	620	-460	600	
2GH 820-H47	50	15.0	345-415△/600-720Y	28.3△/16.34Y	120	74	520	-460	670	1x2BX4 740/...840
	60	17.3	380-480△/660-720Y	33.1△/19.1Y		78	620	-490	750	
2GH 830-H07	50	4.0	345-415△/600-720Y	8.05△/4.65Y	57	70	700	-150	140	1x2BX4 740/...840
	60	4.6	380-480△/660-720Y	9.26△/5.35Y		74	840	-90	90	
2GH 830-H17	50	5.5	345-415△/600-720Y	10.7△/6.18Y	66	70	700	-200	190	1x2BX4 740/...840
	60	6.3	380-480△/660-720Y	12.3△/7.1Y		74	840	-180	180	
2GH 830-H27	50	7.5	345-415△/600-720Y	14.3△/8.26Y	69	70	700	-270	260	1x2BX4 740/...840
	60	8.6	380-480△/660-720Y	16.7△/9.64Y		74	840	-270	260	
2GH 840-H27	50	7.5	345-415△/600-720Y	14.3△/8.26Y	91	74	900	-200	180	1x2BX4 740/...840
	60	8.6	380-480△/660-720Y	16.7△/9.64Y		78	1080	-150	120	
2GH 840-H37	50	11.0	345-415△/600-720Y	20.8△/12.01Y	110	74	900	-280	370	1x2BX4 740/...840
	60	12.6	380-480△/660-720Y	23.8△/13.74Y		78	1050	-310	350	

2GH 8系列 三相电机 / 2BH8 Three-phase motor

下面的性能曲线是在抽吸15°C空气，排气压力1013mbar的工况下测出的，允差±10%，吸入空气和环境温度不超过 25°C时，仍可达到图示总压差。

The performance curves are valid for pumping air at 15°C at the inlet flanges with an air pressure of 1013 mbar and atolerance of ±10%.The total pressure differences are valid up to an intake and ambient temperatruue of 25 .



2GH 9系列 三相电机 / 2BH9 Three-phase motor

气环风机的选型和订购参数

Side channel blower selection and ordering parameters



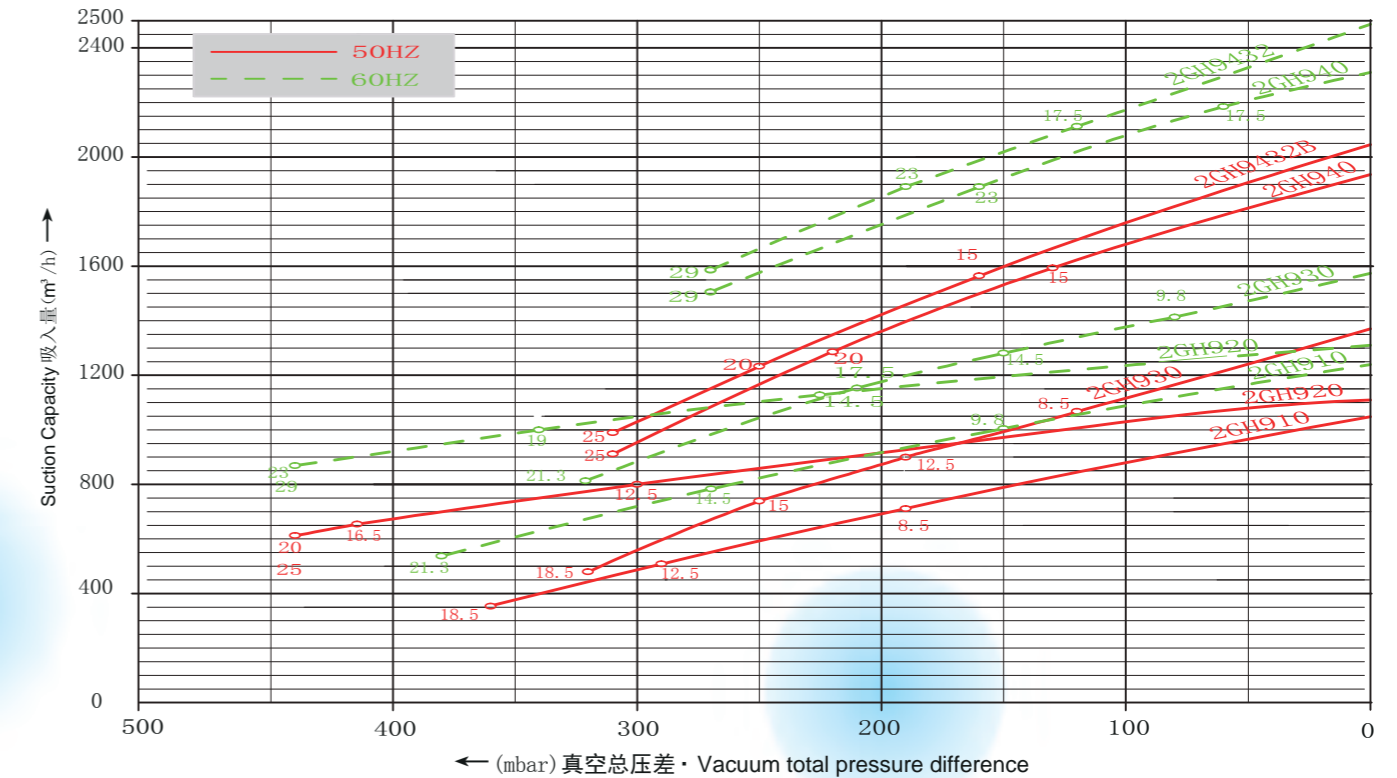
订购型号 Order No.	电机 MOTOR				重量 Weight approx KG	噪音 Sound Pressure level dB(A)	最大流量 Maximum airflow m³/h	最高真空 Maximum Vacuum mbar	最高压力 Maximum pressure mbar	卸压阀 Pressure relief valve Numbers x type
	频率 Frequency HZ	额定 Rated								
		输出功率 output KW	电压 voltage V	电流 current A						
2GH910-H07	50	8.5	345-415△/600-720Y	16.5△/9.53Y	93	74	1050	-190	190	1x2BX4 750/...860
	60	9.8	380-480△/660-720Y	19.1△/11.03Y		79	1250	-150	140	1x2BX4 754/...864
2GH910-H17	50	12.5	345-415△/600-720Y	23.6△/13.63Y	116	74	1050	-290	280	1x2BX4 750/...860
	60	14.5	380-480△/660-720Y	27.4△/15.82Y		79	1250	-270	260	1x2BX4 754/...864
2GH910-H37	50	18.5	345-415△/600-720Y	34.9△/20.15Y	126	74	1050	-360	460	1x2BX4 750/...860
	60	21.3	380-480△/660-720Y	40.2△/23.21Y		79	1250	-380	420	1x2BX4 754/...864
2GH920-H17	50	12.5	345-415△/600-720Y	28.0△/16.2Y	187	74	1110	-300	270	1x2BX4 750/...860
	60	14.5	380-480△/660-720Y	23.6△/13.63Y		78	1310	-220	200	1x2BX4 754/...864
2GH920-H27	50	16.5	345-415△/600-720Y	27.4△/15.82Y	197	74	1110	-410	370	1x2BX4 750/...860
	60	19.0	380-480△/660-720Y	31.1△/17.96Y		78	1320	-340	300	1x2BX4 754/...864
2GH920-H37	50	20.0	345-415△/600-720Y	37.8△/21.82Y	204	74	1110	-440	500	1x2BX4 750/...860
	60	23.0	380-480△/660-720Y	44.4△/25.64Y		78	1310	-440	430	1x2BX4 754/...864
2GH920-H47	50	25.0	345-415△/600-720Y	47.1△/27.19Y	211	74	1110	-440	590	1x2BX4 750/...860
	60	29.0	380-480△/660-720Y	54.7△/31.58Y		78	1310	-440	540	1x2BX4 754/...864
2GH930-H07	50	8.5	345-415△/600-720Y	16.5△/9.53Y	98	75	1370	-120	110	2x2BX4 750/...880
	60	9.8	380-480△/660-720Y	19.1△/11.03Y		80	1650	-80	70	2x2BX4 754/...864
2GH930-H17	50	12.5	345-415△/600-720Y	23.6△/13.63Y	121	75	1370	-190	180	1x2BX4 750/...880
	60	14.5	380-480△/660-720Y	27.4△/15.82Y		80	1650	-150	150	1x2BX4 754/...864
2GH930-H27	50	15.0	345-415△/600-720Y	28.3△/16.34Y	128	75	1370	-250	260	1x2BX4 750/...860
	60	17.5	380-480△/660-720Y	33.1△/19.1Y		80	1650	-210	220	1x2BX4 754/...864
2GH930-H37	50	18.5	345-415△/600-720Y	34.9△/20.15Y	131	75	1370	-320	340	1x2BX4 750/...860
	60	21.3	380-480△/660-720Y	40.2△/23.21Y		80	1650	-320	300	1x2BX4 754/...864
2GH940-H27	50	15.0	345-415△/600-720Y	28.3△/16.34Y	187	75	1940	-130	110	2x2BX4 750/...880
	60	17.5	380-480△/660-720Y	33.1△/19.1Y		84	2310	-60	40	2x2BX4 754/...884
2GH940-H37	50	20.0	345-415△/600-720Y	37.8△/21.82Y	212	75	1940	-220	200	2x2BX4 750/...880
	60	23.0	380-480△/660-720Y	44.4△/25.64Y		84	2310	-160	130	2x2BX4 754/...884
2GH940-H47	50	25.0	345-415△/600-720Y	47.1△/27.19Y	219	75	1940	-310	280	1x2BX4 750/...860
	60	29.0	380-480△/660-720Y	54.7△/31.58Y		84	2310	-270	220	1x2BX4 754/...884
2GH943-H27 ¹⁾	50	15.0	345-415△/600-720Y	28.3△/16.34Y	220	75	2050	-160	170	2x2BX4 750/...870
	60	17.5	380-480△/660-720Y	33.1△/19.1Y		84	2480	-120	110	2x2BX4 754/...874
2GH943-H37 ¹⁾	50	20.0	345-415△/600-720Y	37.8△/21.82Y	230	75	2050	-250	230	2x2BX4 750/...870
	60	23.0	380-480△/660-720Y	44.4△/25.64Y		84	2480	-190	180	2x2BX4 754/...874
2GH943-H47 ¹⁾	50	25.0	345-415△/600-720Y	47.1△/27.19Y	235	75	2050	-310	280	2x2BX4 750/...870
	60	29.0	380-480△/660-720Y	54.7△/31.58Y		84	2480	-270	230	2x2BX4 754/...874

1) 仅可以使用前端盖立式安装 Vertical installation on the end-casing only

2GH 9系列 三相电机 / 2GH9 Three-phase motor

下面的性能曲线是在抽吸15°C空气，排气压力1013mbar的工况下测出的，允差±10%，吸入空气和环境温度不超过 25°C时，仍可达到图示总压差。

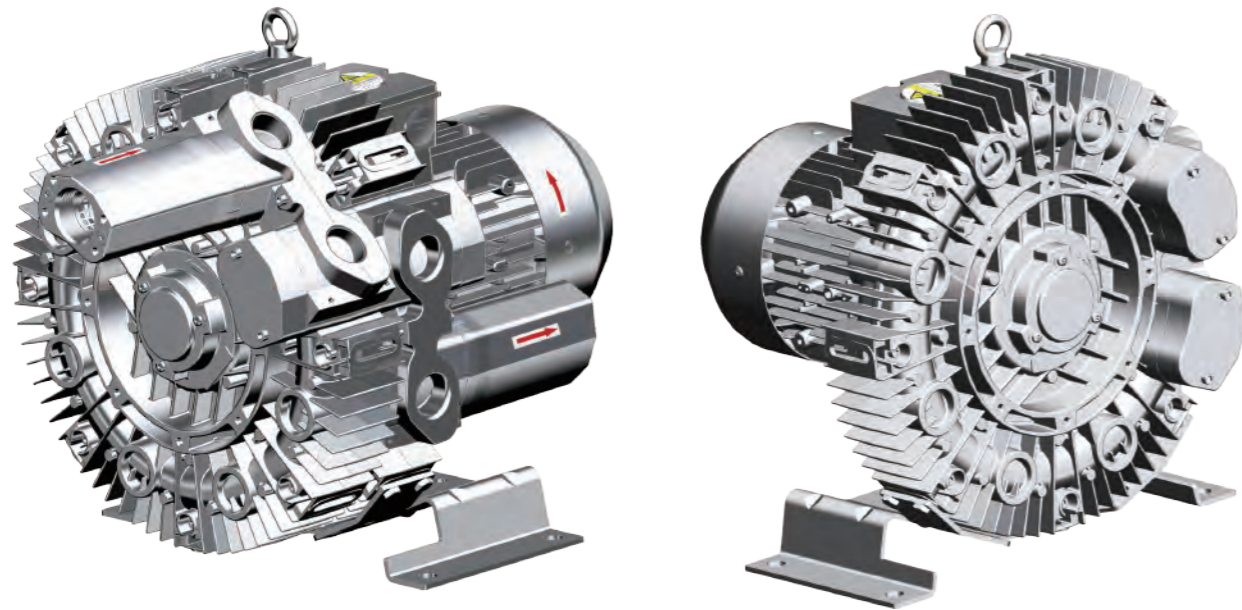
The performance curves are valid for pumping air at 15°C at the inlet flanges with an air pressure of 1013 mbar and atolerance of ±10%.The total pressure differences are valid up to an intake and ambient temprature of 25 .



4GH 单相电机 / 4GH Single-phase motor

气环风机的选型和订购参数

Side channel blower selection and ordering parameters

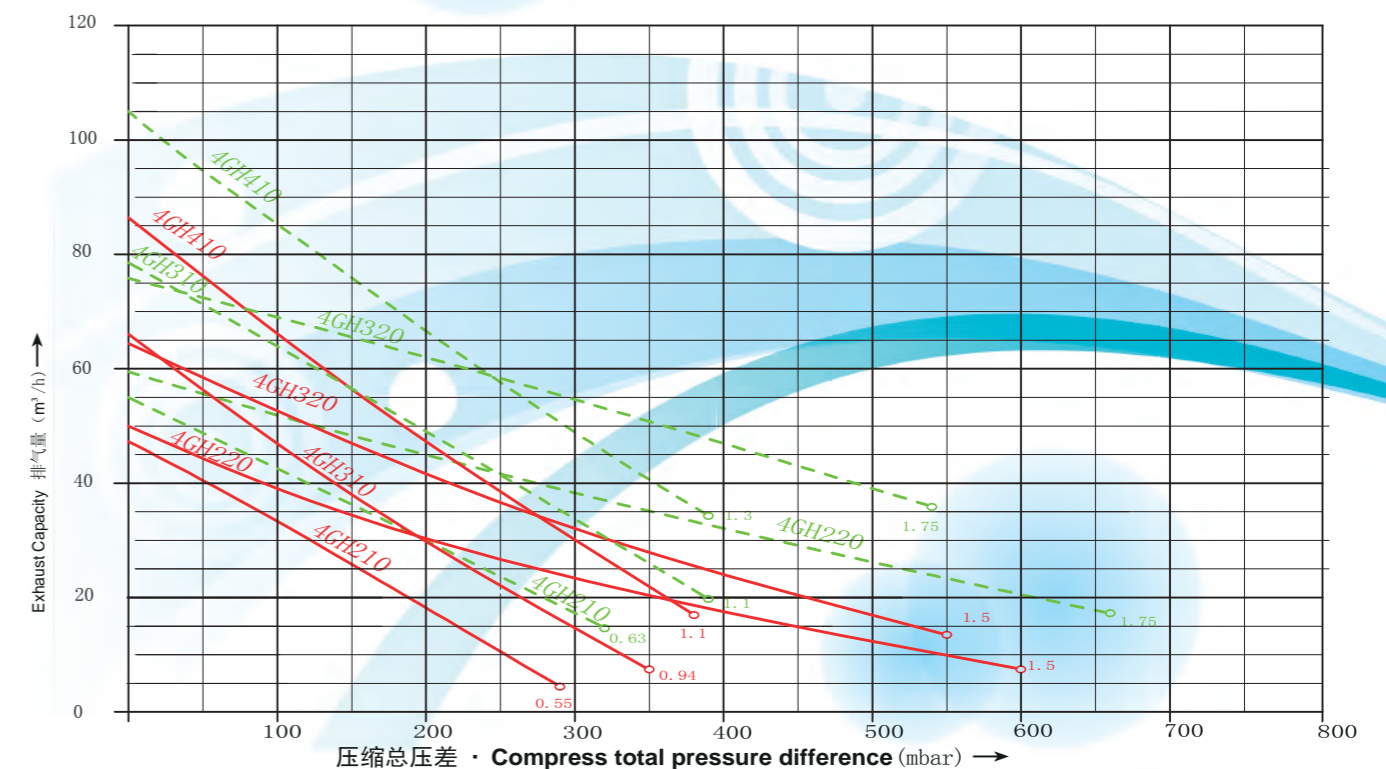
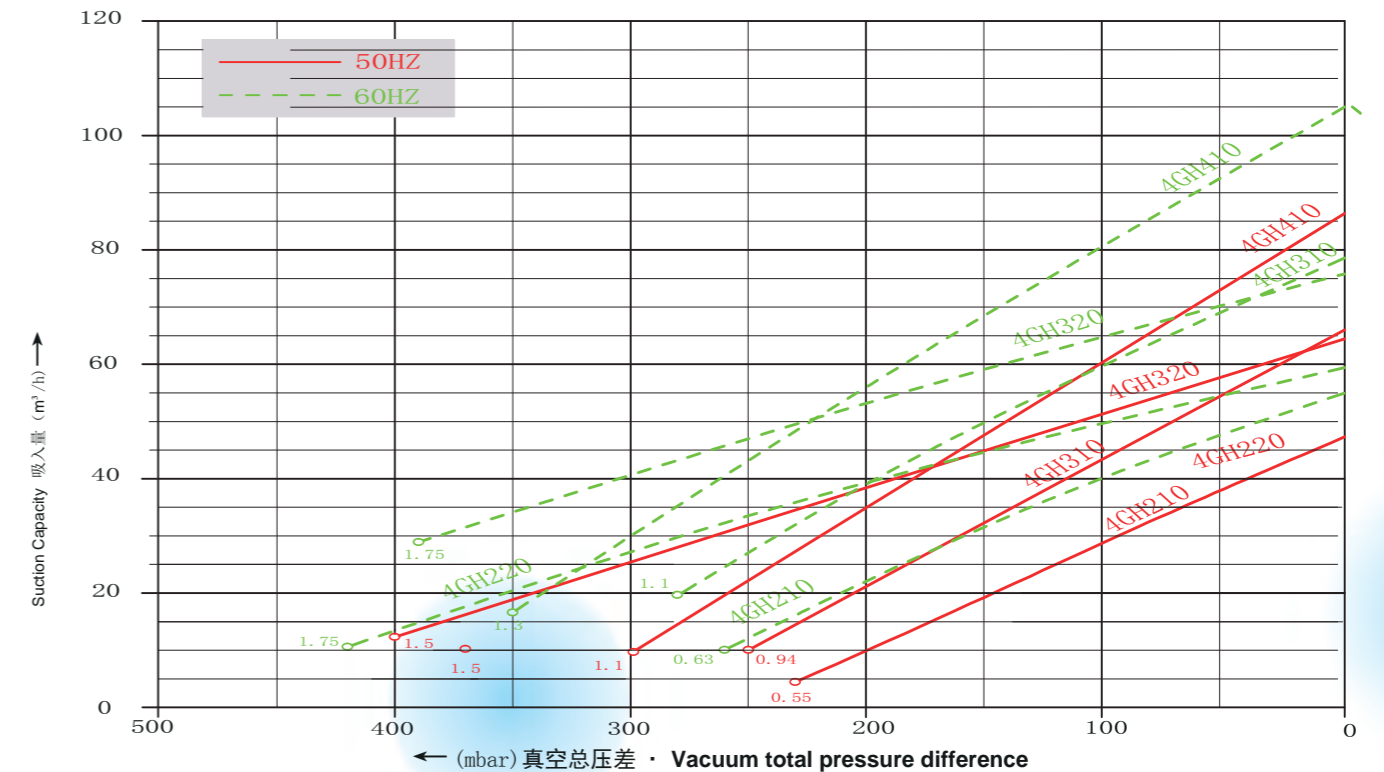


订购型号	电机				重量	噪音	最大流量	最高真空	最高压力	卸压阀 数目 × 型号
	频率	额定								
Order No.	Frequency	Rated			Weight approx	Sound Pressure level	Maximum airflow	Maximum Vacuum	Maximum pressure	Pressure relief valve Numbers × type
		输出功率	电压	电流						
		output	voltage	current						
		KW	V	A	KG	dB(A)	m³/h	mbar	mbar	
4GH 210-V75	50	0.55	115/230	7.8/3.9	18	57	47	-230	290	1x2BX2110....141
	60	0.63	115/230	8.8/4.4		62	57	-260	320	1x2BX2114....142
4GH 220-V75	50	1.5	115/230	118.8/9.4	30	58	47	-370	600	1x2BX2110....141
	60	1.75	115/230	22.0/11.0		62	60	-420	660	1x2BX2114....142
4GH 310-V71	50	0.94	230	5.15	18	57	66	-250	350	1x2BX2110....141
4GH 310-V75	50	0.94	115/230	10.3/5.15	18	57	66	-250	350	1x2BX2110....141
	60	1.1	115/230	14/7		62	80	-280	390	1x2BX2114....142
4GH 320-V75	50	1.5	115/230	18.8/9.4	32	59	65	-400	550	1x2BX2110....141
	60	1.75	115/230	22.0/11.0		63	76	-390	540	1x2BX2114....142
4GH G10-A41	50	1.1	230	7.0	23	58	87	-300	380	1x2BX2110....141
	60	1.3	230	8.4	23	63	105	-350	390	1x2BX2114....142

4GH 单相电机 / 4GH Single-phase motor

下面的性能曲线是在抽吸15°C空气，排气压力1013mbar的工况下测出的，允差±10%，吸入空气和环境温度不超过 25°C时，仍可达到图示总压差。

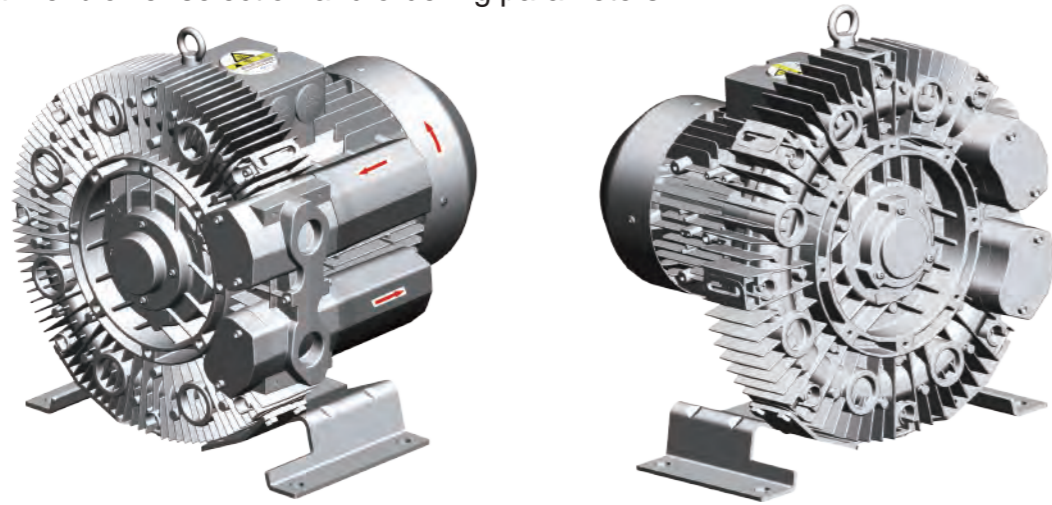
The performance curves are valid for pumping air at 15°C at the inlet flanges with an air pressure of 1013 mbar and atolerance of ±10%.The total pressure differences are valid up to an intake and ambient tempratruue of 25 .



4GH 三相电机 (单叶轮) / 4GH Single-phase motor(Singlestage)

气环风机的选型和订购参数

Side channel blower selection and ordering parameters

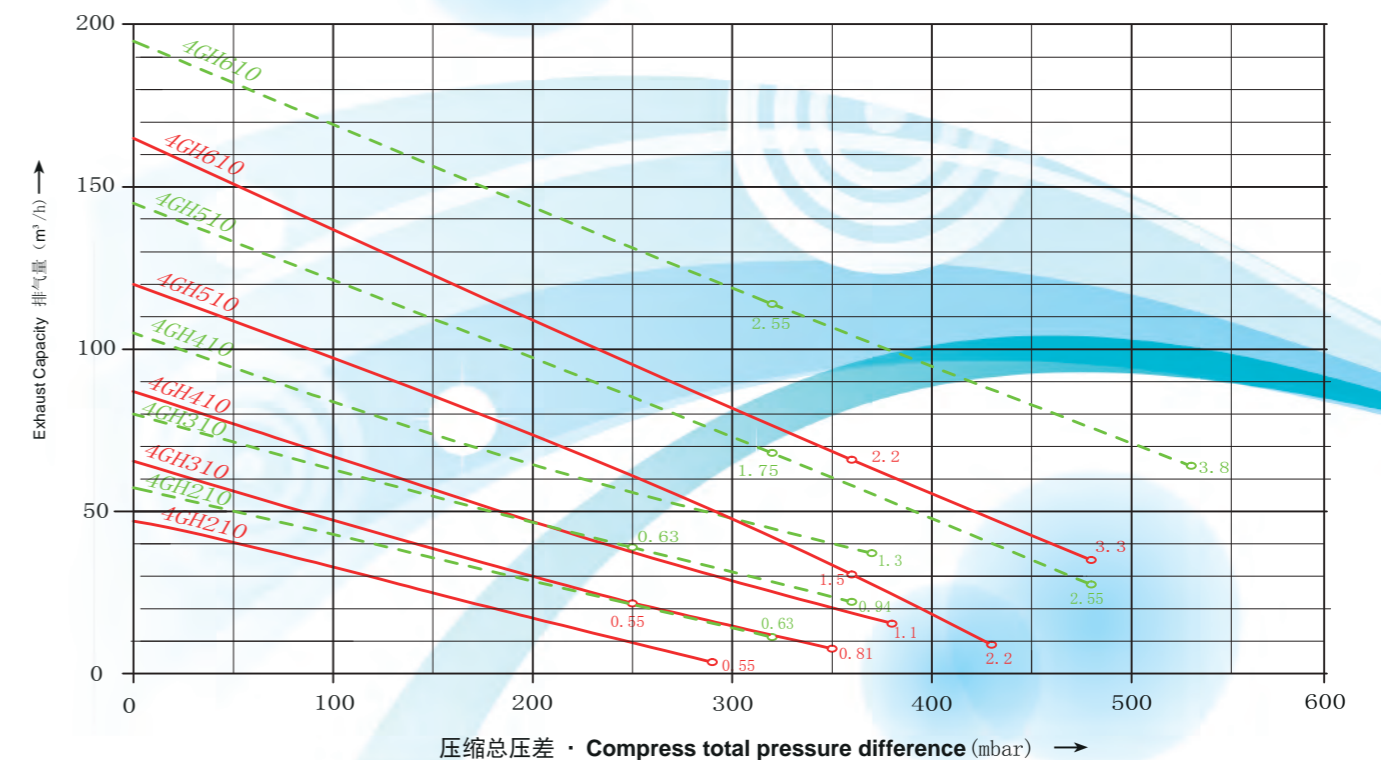
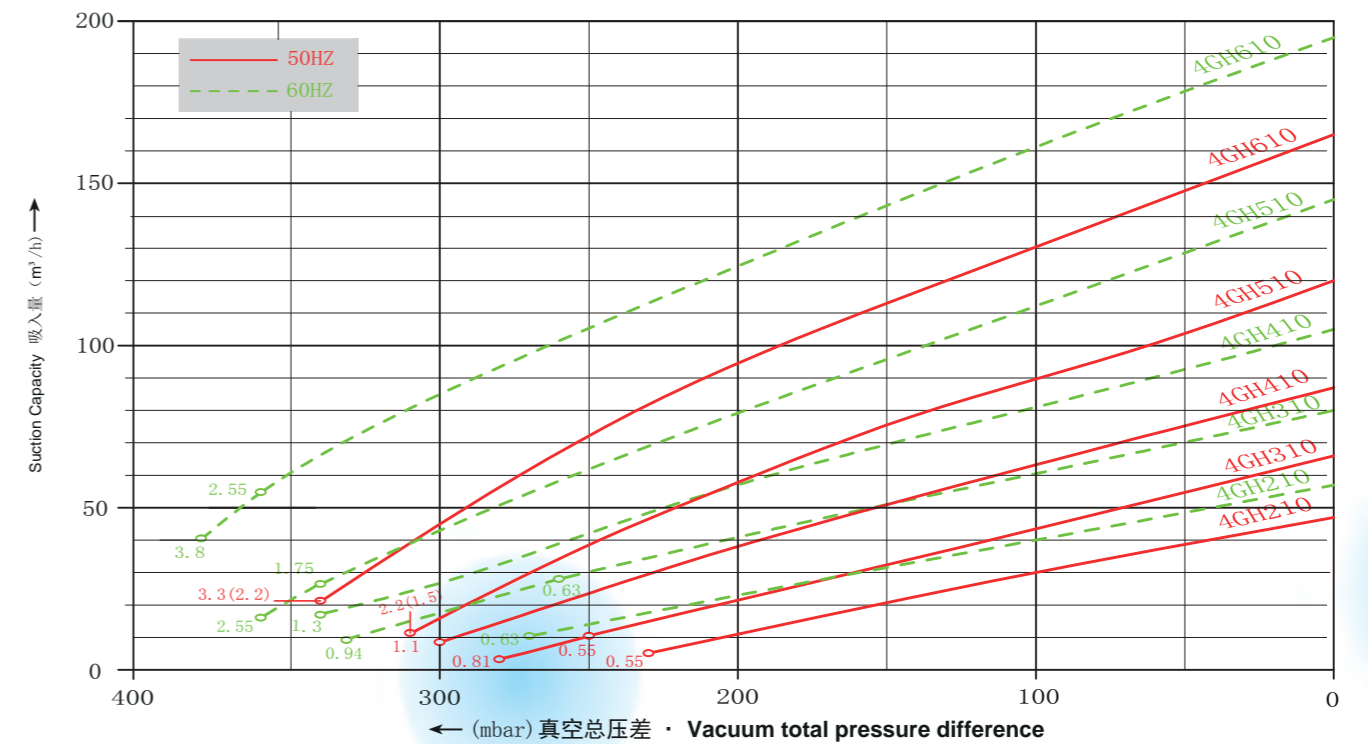


订购型号	电机				重量	噪音	最大流量	最高真空	最高压力	卸压阀
	频率	额定								
		输出功率	电压	电流						
Order No.	MOTOR				Weight approx	Sound Pressure level	Maximum airflow	Maximum Vacuum	Maximum pressure	Pressure relief valve
Frequency	output	voltage	current	Numbers x type						
	HZ	KW	V	A	KG	dB(A)	m³/h	mbar	mbar	
4GH 210-H16	50	0.55	200-240Δ/345-415Y	2.42 Δ/1.4Y	16	57	47	-230	290	1x2BX2 110...141
	60	0.63	220-275Δ/380-480Y	2.91 Δ/1.68Y		62	57	-270	320	1x2BX2 114...142
4GH 310-H16	50	0.55	200-240Δ/345-415Y	2.42 Δ/1.4Y	16	57	66	-250	250	1x2BX2 110...141
	60	0.63	220-275Δ/380-480Y	2.91 Δ/1.68Y		62	80	-260	250	1x2BX2 114...142
4GH 310-H26	50	0.81	200-240Δ/345-415Y	3.15 Δ/1.82Y	17	57	66	-280	350	1x2BX2 110...141
	60	0.94	220-275Δ/380-480Y	3.6 Δ/2.1Y		62	80	-340	360	1x2BX2 114...142
4GH 410-H16	50	1.1	200-240Δ/345-415Y	4.25 Δ/2.45Y	23	58	87	-300	380	1x2BX2 110...141
	60	1.3	220-275Δ/380-480Y	5.02 Δ/2.9Y		62	105	-340	370	1x2BX2 114...142
4GH 510-H16	50	1.5	200-240Δ/345-415Y	5.85 Δ/3.4Y	26	64	120	-310	360	1x2BX2 110...141
	60	1.75	220-275Δ/380-480Y	6.83 Δ/3.95Y		68	145	-340	320	1x2BX2 114...142
4GH 510-H26	50	2.2	200-240Δ/345-415Y	8.14 Δ/4.7Y	29	64	120	-310	430	1x2BX2 110...141
	60	2.55	220-275Δ/380-480Y	9.21 Δ/5.32Y		68	145	-360	480	1x2BX2 114...142
4GH 610-H16	50	2.2	200-240Δ/345-415Y	8.14 Δ/4.7Y	32	65	165	-340	360	1x2BX2 110...141
	60	2.55	220-275Δ/380-480Y	9.21 Δ/5.32Y		71	195	-360	320	1x2BX2 114...142
4GH 610-H36	50	3.3	200-240Δ/345-415Y	13.3 Δ/7.65Y	35	65	165	-340	480	1x2BX2 110...141
	60	3.8	220-275Δ/380-480Y	12.04 Δ/6.95Y		71	195	-380	530	1x2BX2 114...142

4GH 三相电机 (单叶轮) / 4GH Single-phase motor(Singlestage)

下面的性能曲线是在抽吸15°C空气，排气压力1013mbar的工况下测出的，允差±10%，吸入空气和环境温度不超过 25°C时，仍可达到图示总压差。

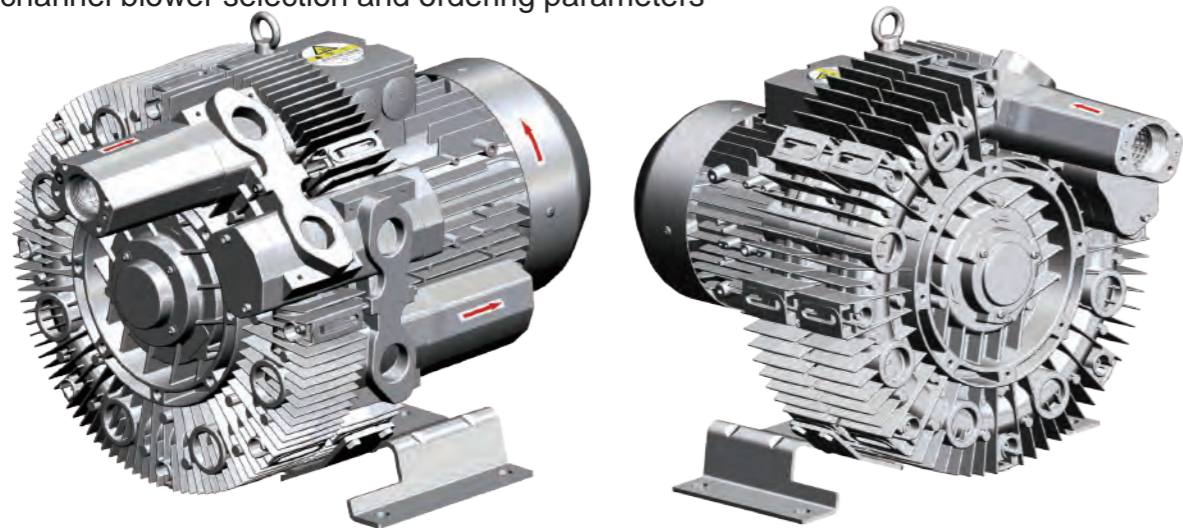
The performance curves are valid for pumping air at 15°C at the inlet flanges with an air pressure of 1013 mbar and atolerance of ±10%.The total pressure differences are valid up to an intake and ambient temperatruue of 25 .



4GH 三相电机 (多叶轮) / 4GH Single-phase motor (Multi-stage)

气环风机的选型和订购参数

Side channel blower selection and ordering parameters

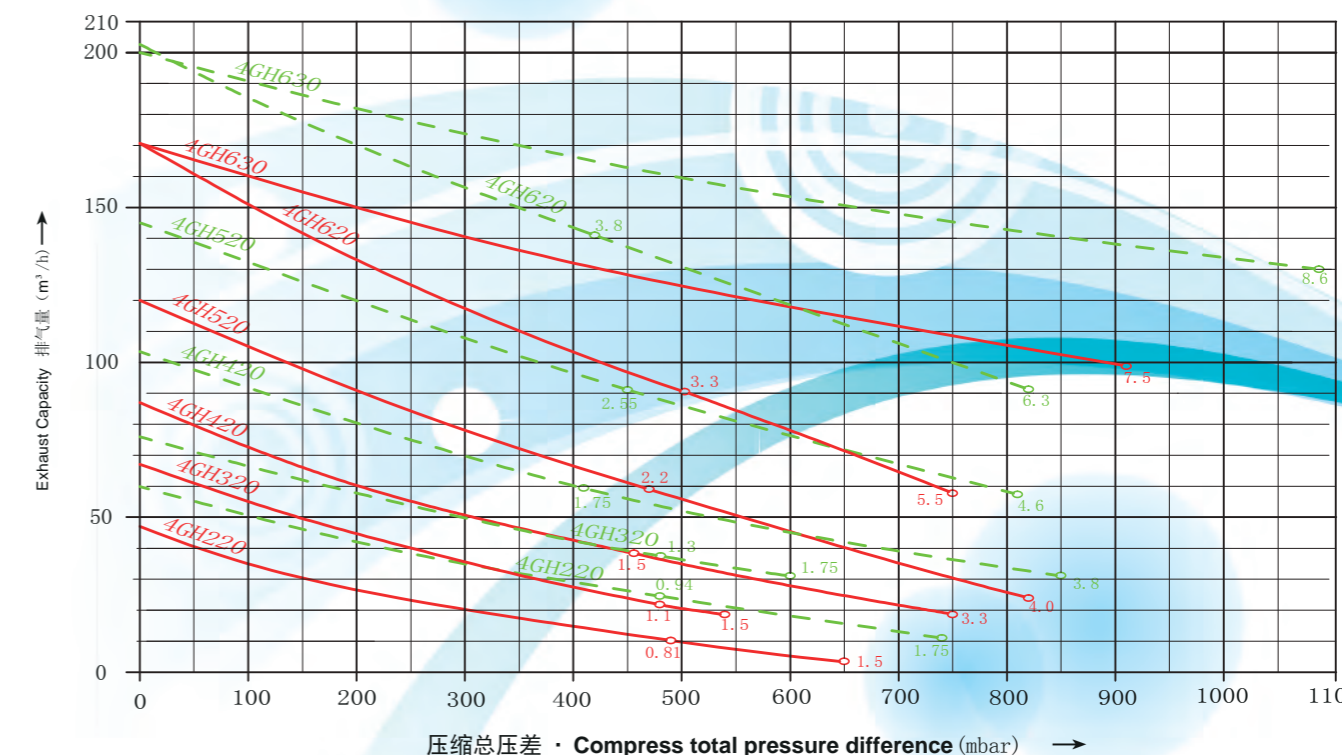
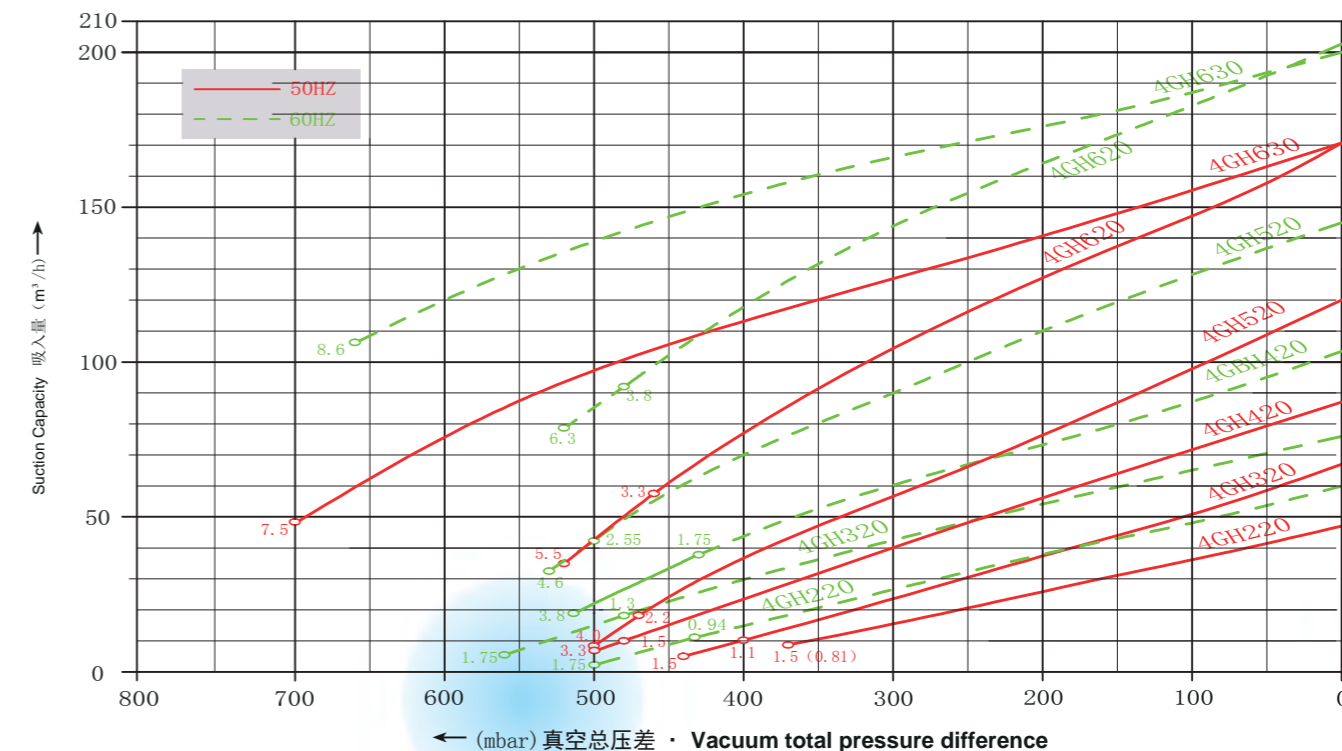


订购型号	电机				重量	噪音	最大流量	最高真空	最高压力	卸压阀
	频率	额定								
		输出功率	电压	电流						
Order No.	MOTOR				Weight approx	Sound Pressure level	Maximum airflow	Maximum Vacuum	Maximum pressure	Pressure relief valve
Frequency	Rated			Numbers × type						
	output	voltage	current							
	HZ	KW	V	A	KG	dB(A)	m³/h	mbar	mbar	
4GH 220-H26	50	0.81	200-240△/345-415Y	3.15△/1.82Y	24	58	47	-370	490	1x2BX2 110...141
	60	0.94	220-275△/380-480Y	3.6△/2.1Y		62	60	-440	480	1x2BX2 114...142
4GH 220-H56	50	1.5	200-240△/345-415Y	5.85△/3.4Y	28	58	47	-370	650	1x2BX2 110...141
	60	1.75	220-275△/380-480Y	6.83△/3.95Y		62	60	-500	740	1x2BX2 114...142
4GH 320-H46	50	1.1	200-240△/345-415Y	4.25△/2.45Y	29	59	65	-400	480	1x2BX2 110...141
	60	1.3	220-275△/380-480Y	5.02△/2.9Y		63	76	-480	480	1x2BX2 114...142
4GH 320-H56	50	1.5	200-240△/345-415Y	5.85△/3.4Y	30	59	65	-440	540	1x2BX2 110...141
	60	1.75	220-275△/380-480Y	6.83△/3.95Y		63	76	-560	600	1x2BX2 114...142
4GH 420-H26	50	1.5	200-240△/345-415Y	5.85△/3.4Y	33	61	87	-480	450	1x2BX2 110...141
	60	1.75	220-275△/380-480Y	6.83△/3.95Y		66	105	-430	410	1x2BX2 114...142
4GH 420-H56	50	3.3	200-240△/345-415Y	13.3△/7.65Y	39	61	87	-500	750	1x2BX2 110...141
	60	3.8	220-275△/380-480Y	12.04△/6.95Y		66	105	-510	850	1x2BX2 114...142
4GH 520-H26	50	2.2	200-240△/345-415Y	8.14△/4.7Y	40	64	120	-470	460	1x2BX2 110...141
	60	2.55	220-275△/380-480Y	9.21△/5.32Y		70	145	-500	450	1x2BX2 114...142
4GH 520-H77	50	4	345-415△/600-720Y	8.05△/4.65Y	51	65	120	-500	820	1x2BX2 110...141
	60	4.6	380-480△/660-720Y	9.26△/5.35Y		71	145	-530	810	1x2BX2 114...142
4GH 620-H36	50	3.3	200-240△/345-415Y	13.3△/7.65Y	48	67	165	-460	500	1x2BX2 110...141
	60	3.8	220-275△/380-480Y	12.04△/6.95Y		71	195	-480	420	1x2BX2 114...142
4GH 620-H57	50	5.5	345-415△/600-720Y	10.7△/6.18Y	65	68	165	-520	750	1x2BX2 110...141
	60	6.3	380-480△/660-720Y	12.3△/7.1Y		72	195	-520	820	1x2BX2 114...142
4GH 630-H67	50	7.5	345-415△/600-720Y	14.3△/8.26Y	86	72	170	-700	910	1x2BX2 110...141
	60	8.6	380-480△/660-720Y	16.7△/9.64Y		76	200	-660	1080	1x2BX2 114...142

4GH 三相电机 (多叶轮) / 4GH Single-phase motor (Multi-stage)

下面的性能曲线是在抽吸15°C空气，排气压力1013mbar的工况下测出的，允差±10%，吸入空气和环境温度不超过 25°C时，仍可达到图示总压差。

The performance curves are valid for pumping air at 15°C at the inlet flanges with an air pressure of 1013 mbar and atolerance of ±10%.The total pressure differences are valid up to an intake and ambient tempratruue of 25 .



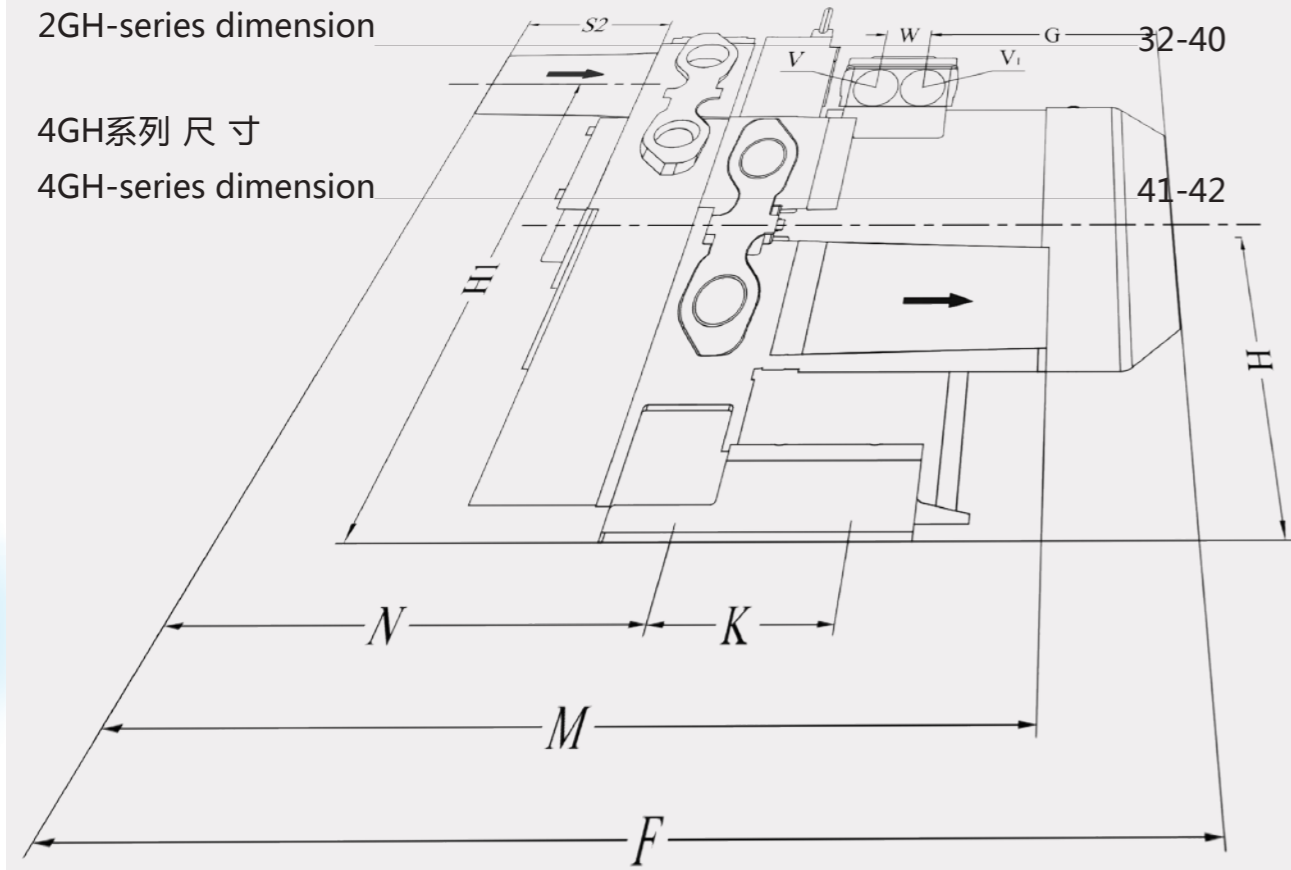
尺寸 Dimension

2GH系列 尺寸

2GH-series dimension

4GH系列 尺寸

4GH-series dimension

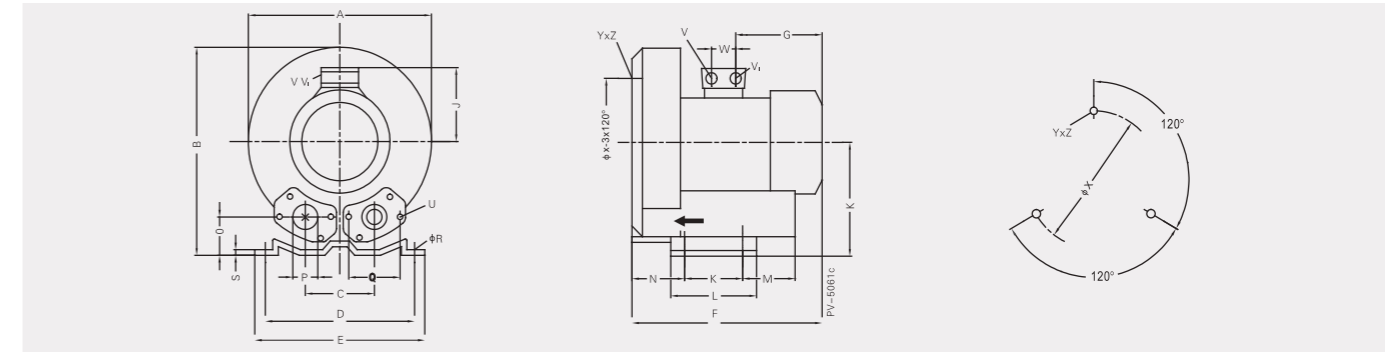


尺寸 Dimension

Dimensions for side channel blower

气环风机尺寸

2GH 210./2GH230./2GH310./2GH330



Type	Phases	(mm)														
型号	相位	A	B	C	D	E	F	G	H	J	K	L	M	N	O	
2GH 210-H06	3 ~	246	247	90	205	230	229	102	128	108	83	108	99	71	39	
2GH 210-V15	1 ~	246	247	90	205	230	251	120	128	118	83	108	99	71	39	
2GH 210-H16	3 ~	246	247	90	205	230	251	120	128	118	83	108	99	71	39	
2GH 210-A11	1 ~	246	247	90	205	230	251	120	128	118	83	108	99	71	39	
2GH 230-H06	3 ~	246	247	90	205	230	242	102	128	108	83	108	99	82	39	
2GH 230-H16	3 ~	246	247	90	205	230	262	120	128	118	83	108	99	82	39	
2GH 230-H26	3 ~	246	247	90	205	230	262	120	128	118	83	108	99	82	39	
2GH 230-V15	1 ~	246	247	90	205	230	262	120	128	118	83	108	99	82	39	
2GH 230-A11	1 ~	246	247	90	205	230	262	120	128	118	83	108	99	82	39	
2GH 310-H06	3 ~	268	272	93	205	230	255	120	141	118	83	108	104	69	41	
2GH 310-H16	3 ~	268	272	93	205	230	255	120	141	118	83	108	104	69	41	
2GH 310-A01	1 ~	268	272	93	205	230	255	120	141	118	83	108	104	69	41	
2GH 310-A11	1 ~	268	272	93	205	230	255	120	141	118	83	108	104	69	41	
2GH 330-H06	3 ~	268	272	93	205	230	270	120	141	118	83	108	104	85	41	
2GH 330-H16	3 ~	268	272	93	205	230	270	120	141	118	83	108	104	85	41	
2GH 330-A11	1 ~	268	272	93	205	230	270	120	141	118	83	108	104	85	41	

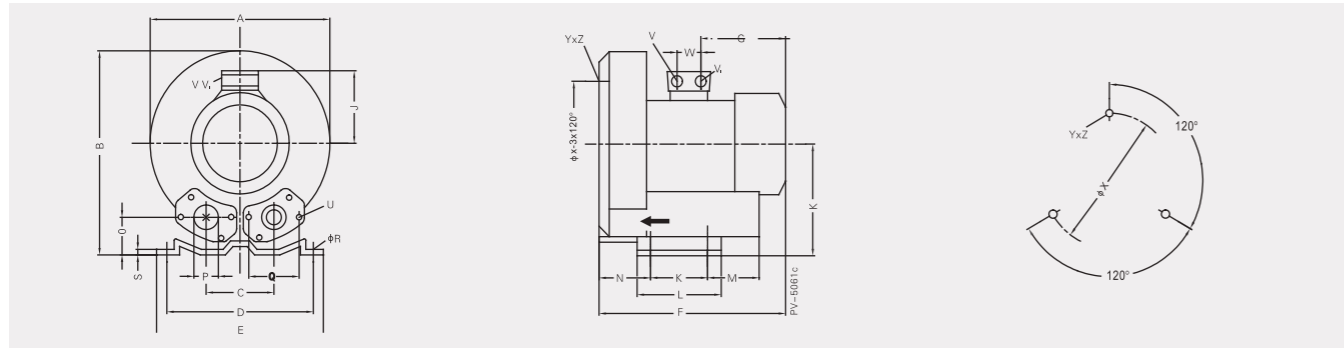
Type	Phases									X-Holes	(mm)	
型号	相位	P	Q	φR	S	U	V	V1	YxZ	φX	W	
2GH 210-H06	3 ~	G1¼(15deep)	64	10	3	M6x17	M16x1.5	M25x1.5	M6x15	0°/120°/240°	140	32
2GH 210-H15	1 ~	G1¼(15deep)	64	10	3	M6x17	M16x1.5	M25x1.5	M6x15	0°/120°/240°	140	32
2GH 210-H16	3 ~	G1¼(15deep)	64	10	3	M6x17	M16x1.5	M25x1.5	M6x15	0°/120°/240°	140	32
2GH 210-H11	1 ~	G1¼(15deep)	64	10	3	M6x17	M16x1.5	M25x1.5	M6x15	0°/120°/240°	140	32
2GH 230-H06	3 ~	G1¼(15deep)	64	10	3	M6x17	M16x1.5	M25x1.5	M6x15	0°/120°/240°	140	32
2GH 230-H16	3 ~	G1¼(15deep)	64	10	3	M6x17	M16x1.5	M25x1.5	M6x15	0°/120°/240°	140	32
2GH 230-H26	3 ~	G1¼(15deep)	64	10	3	M6x17	M16x1.5	M25x1.5	M6x15	0°/120°/240°	140	32
2GH 230-V15	1 ~	G1¼(15deep)	64	10	3	M6x17	M16x1.5	M25x1.5	M6x15	0°/120°/240°	140	32
2GH 230-A11	1 ~	G1¼(15deep)	64	10	3	M6x17	M16x1.5	M25x1.5	M6x15	0°/120°/240°	140	32
2GH 310-H06	3 ~	G1¼(15deep)	64	10	3	M6x17	M16x1.5	M25x1.5	M6x15	0°/120°/240°	160	32
2GH 310-H16	3 ~	G1¼(15deep)	64	10	3	M6x17	M16x1.5	M25x1.5	M6x15	0°/120°/240°	160	32
2GH 310-A01	1 ~	G1¼(15deep)	64	10	3	M6x17	M16x1.5	M25x1.5	M6x15	0°/120°/240°	160	32
2GH 310-A11	1 ~	G1¼(15deep)	64	10	3	M6x17	M16x1.5	M25x1.5	M6x15	0°/120°/240°	160	32
2GH 330-H06	3 ~	G1¼(15deep)	64	10	3	M6x17	M16x1.5	M25x1.5	M6x15	0°/120°/240°	160	32
2GH 330-H16	3 ~	G1¼(15deep)	64	10	3	M6x17	M16x1.5	M25x1.5	M6x15	0°/120°/240°	160	32
2GH 330-A11	1 ~	G1¼(15deep)	64	10	3	M6x17	M16x1.5	M25x1.5	M6x15	0°/120°/240°	160	32

尺寸 Dimension

Dimensions for side channel blower

气环风机尺寸

2GH 410./2GH430./2GH490.



Type	Phases	(mm)														
型号	相位	A	B	C	D	E	F	G	H	J	K	L	M	N	O	
2GH 410-A11	1~	286	302	115	225	255	318	165	154	128	95	130	70	75	46	
2GH 410-A21	1~	286	302	115	225	255	318	165	154	128	95	130	70	75	46	
2GH 410-V25	1~	286	302	115	225	255	318	165	154	128	95	130	70	75	46	
2GH 410-H06	3~	286	302	115	225	255	264	120	154	118	95	130	70	75	46	
2GH 410-H16	3~	286	302	115	225	255	318	165	154	128	95	130	70	75	46	
2GH 410-H26	3~	286	302	115	225	255	318	165	154	128	95	130	70	75	46	
2GH 430-A11	1~	286	302	115	225	255	337	165	154	128	95	130	70	75	46	
2GH 430-A21	1~	286	302	115	225	255	337	165	154	128	95	130	70	75	46	
2GH 430-H06	3~	286	302	115	225	255	283	120	154	118	95	130	70	75	46	
2GH 430-H16	3~	286	302	115	225	255	337	165	154	128	95	130	70	75	46	
2GH 430-H06	3~	286	302	115	225	255	337	165	154	128	95	130	70	75	46	
2GH 410-V25	1~	286	302	115	225	255	337	165	154	128	95	130	70	75	46	
2GH 490-V25	1~	286	302	115	225	255	318	165	154	128	95	130	70	75	46	
2GH 490-H16	3~	286	302	115	225	255	264	120	154	118	95	130	70	75	46	

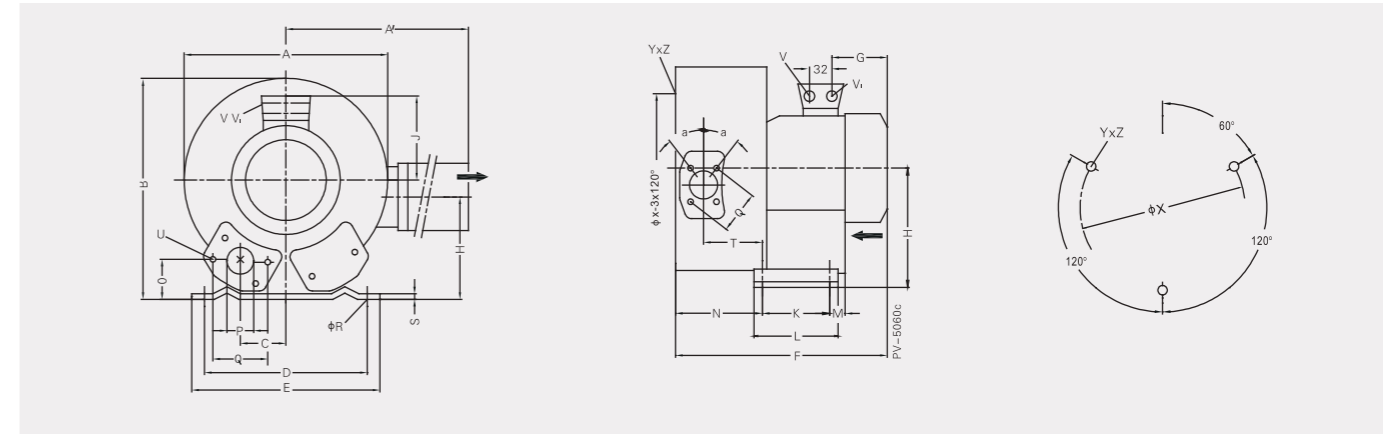
Type	Phases	(mm)								X-Holes	(mm)	
型号	相位	P	Q	φR	S	U	V	V ₁	Y×Z		φX	W
2GH 410-A11	1~	G1½(15deep)	72	12	3	M6×19	M16×1.5	M25×1.5	M6×15	0°/120°/240°	174	32
2GH 410-A21	1~	G1½(15deep)	72	12	3	M6×19	M16×1.5	M25×1.5	M6×15	0°/120°/240°	174	32
2GH 410-V25	1~	G1½(15deep)	72	12	3	M6×19	M16×1.5	M25×1.5	M6×15	0°/120°/240°	174	32
2GH 410-H06	3~	G1½(15deep)	72	12	3	M6×19	M16×1.5	M25×1.5	M6×15	0°/120°/240°	174	32
2GH 410-H16	3~	G1½(15deep)	72	12	3	M6×19	M16×1.5	M25×1.5	M6×15	0°/120°/240°	174	32
2GH 410-H26	3~	G1½(15deep)	72	12	3	M6×19	M16×1.5	M25×1.5	M6×15	0°/120°/240°	174	32
2GH 430-A11	1~	G1½(15deep)	72	12	3	M6×19	M16×1.5	M25×1.5	M6×15	0°/120°/240°	174	32
2GH 430-A21	1~	G1½(15deep)	72	12	3	M6×19	M16×1.5	M25×1.5	M6×15	0°/120°/240°	174	32
2GH 430-H06	3~	G1½(15deep)	72	12	3	M6×19	M16×1.5	M25×1.5	M6×15	0°/120°/240°	174	32
2GH 430-H16	3~	G1½(15deep)	72	12	3	M6×19	M16×1.5	M25×1.5	M6×15	0°/120°/240°	174	32
2GH 430-H06	3~	G1½(15deep)	72	12	3	M6×19	M16×1.5	M25×1.5	M6×15	0°/120°/240°	174	32
2GH 410-V25	1~	G1½(15deep)	72	12	3	M6×19	M16×1.5	M25×1.5	M6×15	0°/120°/240°	174	32
2GH 490-V25	1~	G1½(15deep)	72	12	3	M6×19	M16×1.5	M25×1.5	M6×15	0°/120°/240°	174	32
2GH 490-H16	3~	G1½(15deep)	72	12	3	M6×19	M16×1.5	M25×1.5	M6×15	0°/120°/240°	174	32

尺寸 Dimension

Dimensions for side channel blower

气环风机尺寸

2GH 220./2GH320./2GH420.



Type	Phases	(mm)																
型号	相位	A	A'	B	C	D	E	F	G	H	H'	J	K	L	M	N	O	
2GH 220-H26	3~	284	316	270	45	205	230	310	120	128	106	118	83	108	99	130	39	
2GH 320-H36	3~	293	324	286	47	205	230	377	165	141	114	128	83	108	104	138	41	
2GH 320-A31	1~	293	324	286	47	205	230	377	165	141	114	128	83	108	104	138	41	
2GH 420-H36	3~	322	324	315	58	225	255	415	180	154	153	143	95	130	70	151	45	
2GH 420-H46	3~	322	324	315	58	225	255	415	180	154	153	143	95	130	70	151	45	
2GH 420-A31	1~	322	324	315	58	225	255	415	180	154	153	143	95	130	70	151	45	
2GH 420-V45	1~	322	324	315	58	225	255	415	180	154	153	143	95	130	70	151	45	

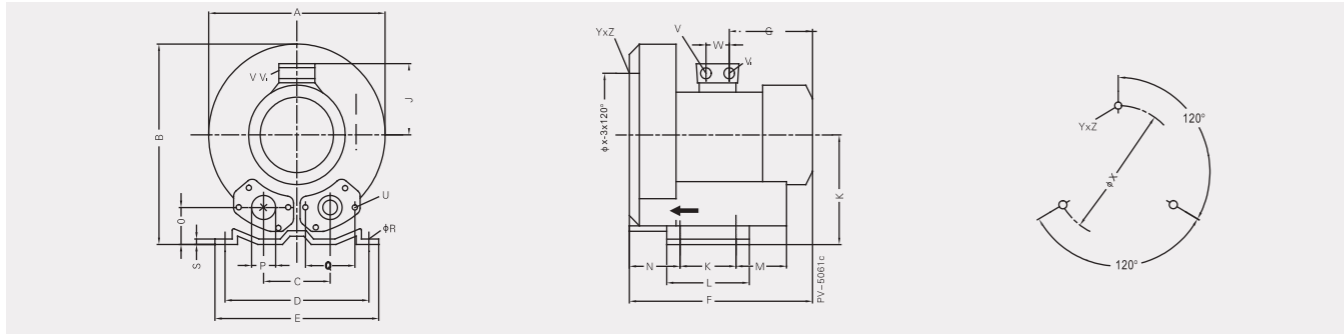
Type	Phases	(mm)												X-Holes	(mm)
型号	相位	P	Q	φR	S	T	U	V	V ₁	α	φX	Y×Z	W		
2GH 220-H26	3~	G1½(15deep)	64	10	3	88	M6×17	M16×1.5	M25×1.5	27°	140	M6×15	51°/171°/291°	32	
2GH 320-H36	3~	G1½(15deep)	64	10	3	92	M6×17	M16×1.5	M25×1.5	27°	160	M6×15	51°/171°/291°	32	
2GH 320-H31	1~	G1½(15deep)	64	10	3	92	M6×17	M16×1.5	M25×1.5	27°	160	M6×15	51°/171°/291°	32	
2GH 420-H36	3~	G1½(15deep)	72	12	3	104	M6×19	M25×1.5	M25×1.5	28°	174	M6×15	51°/171°/291°	38	
2GH 420-H46	3~	G1½(15deep)	72	12	3	104	M6×19	M25×1.5	M25×1.5	28°	174	M6×15	51°/171°/291°	38	
2GH 420-A31	1~	G1½(15deep)	72	12	3	104	M6×19	M25×1.5	M25×1.5	28°	174	M6×15	51°/171°/291°	38	
2GH 420-V45	1~	G1½(15deep)	72	12	3	104	M6×19	M25×1.5	M25×1.5	28°	174	M6×15	51°/171°/291°	38	

尺寸 Dimension

Dimensions for side channel blower

气环风机尺寸

2GH 510./2GH530./2GH590.



Type	Phases	(mm)														
型号	相位	A	B	C	D	E	F	G	H	J	K	L	M	N	O	
2GH 510-A11	1~	334	337	120	260	295	339	165	175	18	115	155	96	87	48	
2GH 510-A21	1~	334	337	120	260	295	359	180	175	143	115	155	96	87	48	
2GH 510-V35	1~	334	337	120	260	295	359	180	175	143	115	155	96	87	48	
2GH 510-H06	3~	334	337	120	260	295	339	165	175	128	115	155	96	87	48	
2GH 510-H16	3~	334	337	120	260	295	339	165	175	128	115	155	96	87	48	
2GH 510-H26	3~	334	337	120	260	295	359	180	175	143	115	155	96	87	48	
2GH 510-H36	3~	334	337	120	260	295	359	180	175	143	115	155	96	87	48	
2GH 530-A11	1~	334	337	120	260	295	359	165	175	128	115	155	96	87	48	
2GH 530-A21	1~	334	337	120	260	295	379	180	175	143	115	155	96	87	48	
2GH 530-H06	3~	334	337	120	260	295	359	165	175	128	115	155	96	87	48	
2GH 530-H16	3~	334	337	120	260	295	359	165	175	128	115	155	96	87	48	
2GH 530-H26	3~	334	337	120	260	295	379	180	175	143	115	155	96	87	48	
2GH 530-H36	3~	334	337	120	260	295	379	180	175	143	115	155	96	87	48	
2GH 530-V35	1~	334	337	120	260	295	379	180	175	143	115	155	96	87	48	
2GH 590-H26	3~	334	337	120	260	295	339	165	175	128	115	155	96	87	48	

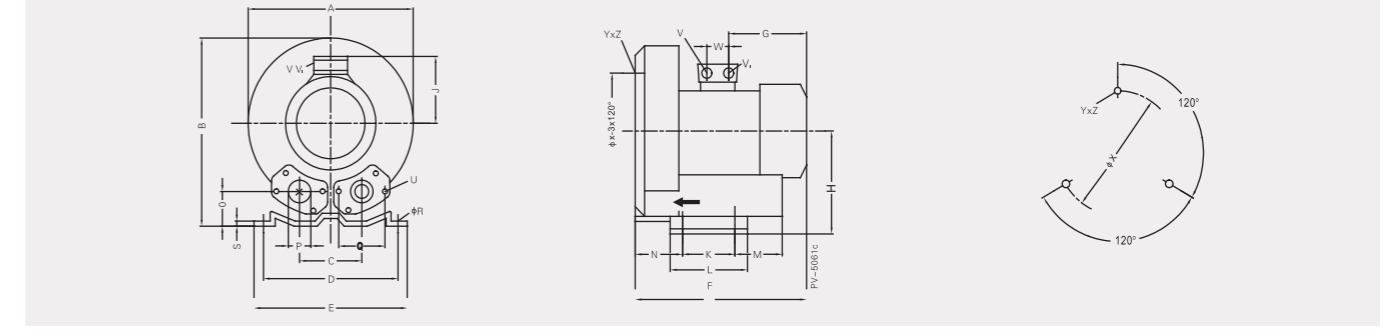
Type	Phases	(mm)								X-Holes	(mm)	
型号	相位	φP	Q	φR	S	U	V	V _i	Y×Z		φX	W
2GH 510-A11	1~	55	83	14	4	M8×17	M16×1.5	M25×1.5	M8×20	0°/120°/240°	200	32
2GH 510-A21	1~	55	83	14	4	M8×17	M25×1.5	M25×1.5	M8×20	0°/120°/240°	200	38
2GH 510-V35	1~	55	83	14	4	M8×17	M25×1.5	M25×1.5	M8×20	0°/120°/240°	200	38
2GH 510-H06	3~	55	83	14	4	M8×17	M16×1.5	M25×1.5	M8×20	0°/120°/240°	200	32
2GH 510-H16	3~	55	83	14	4	M8×17	M16×1.5	M25×1.5	M8×20	0°/120°/240°	200	32
2GH 510-H26	3~	55	83	14	4	M8×17	M25×1.5	M25×1.5	M8×20	0°/120°/240°	200	38
2GH 510-H36	3~	55	83	14	4	M8×17	M25×1.5	M25×1.5	M8×20	0°/120°/240°	200	38
2GH 530-A11	1~	55	83	14	4	M8×17	M16×1.5	M25×1.5	M8×20	0°/120°/240°	200	32
2GH 530-A21	1~	55	83	14	4	M8×17	M25×1.5	M25×1.5	M8×20	0°/120°/240°	200	38
2GH 530-H06	3~	55	83	14	4	M8×17	M16×1.5	M25×1.5	M8×20	0°/120°/240°	200	32
2GH 530-H16	3~	55	83	14	4	M8×17	M16×1.5	M25×1.5	M8×20	0°/120°/240°	200	32
2GH 530-H26	3~	55	83	14	4	M8×17	M25×1.5	M25×1.5	M8×20	0°/120°/240°	200	38
2GH 530-H36	3~	55	83	14	4	M8×17	M25×1.5	M25×1.5	M8×20	0°/120°/240°	200	38
2GH 530-V35	1~	55	83	14	4	M8×17	M25×1.5	M25×1.5	M8×20	0°/120°/240°	200	38
2GH 590-H26	3~	55	83	14	4	M8×17	M16×1.5	M25×1.5	M8×20	0°/120°/240°	200	32

尺寸 Dimension

Dimensions for side channel blower

气环风机尺寸

2GH 610./2GH 630./2GH710/2GH730./2GH790



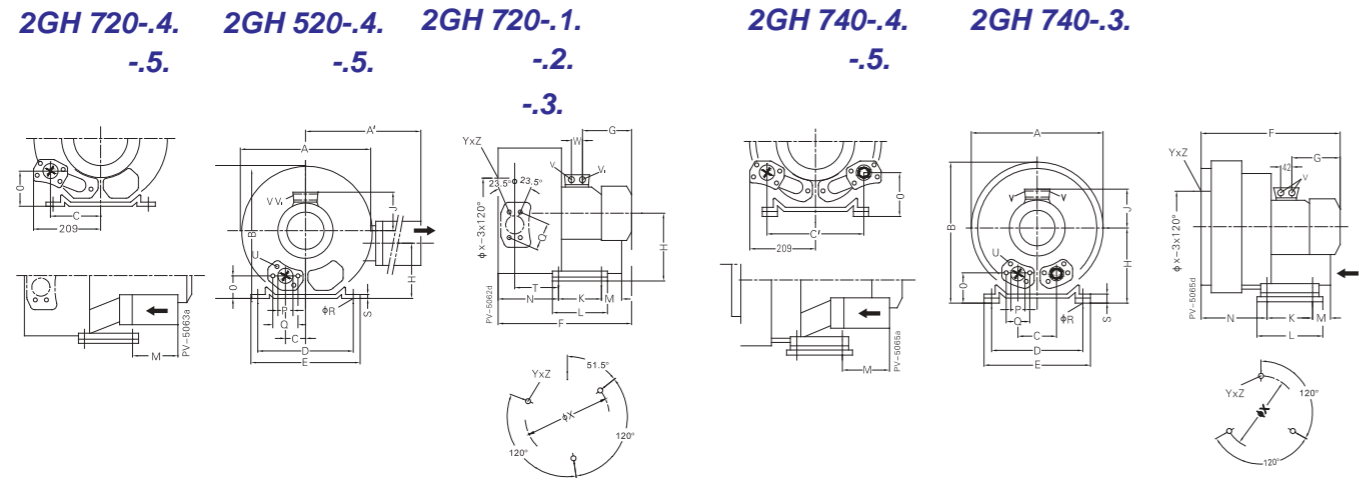
Type	Phase	(mm)														
型号	相位	A	B	C	D	E	F	G	H	J	K	L	M	N	O	
2GH 610-H06	3~	360	366	122	290	325	366	180	192	143	140	180	84	94	52	
2GH 610-H16	3~	360	366	122	290	325	366	180	192	143	140	180	84	94	52	
2GH 610-H26	3~	360	366	122	290	325	420	226	192	165	140	180	84	94	52	
2GH 630-H06	3~	360	366	122	290	325	384	180	192	143	140	180	84	94	52	
2GH 630-H16	3~	360	366	122	290	325	384	180	192	143	140	180	84	94	52	
2GH 630-H26	3~	360	366	122	290	325	438	226	192	165	140	180	84	94	52	
2GH 710-A11	1~	382	384	125	290	325	391	180	197	143	140	180	84	109	54	
2GH 710-H06	3~	382	384	125	290	325	391	180	197	143	140	180	84	109	54	
2GH 710-H16	3~	382	384	125	290	325	391	180	197	143	140	180	84	109	54	
2GH 710-H26	3~	360	366	122	290	325	445	226	197	165	140	180	84	109	52	
2GH 710-H37	3~	360	366	122	290	325	445	226	197	165	140	180	84	109	52	
2GH 730-H06	3~	360	366	122	290	325	401	180	197	143	140	180	84	109	52	
2GH 730-H16	3~	360	366	122	290	325	401	180	197	143	140	180	84	109	52	
2GH 730-H26	3~	382	384	125	290	325	455	226	197	165	140	180	84	109	52	
2GH 730-H37	3~	382	384	125	290	325	455	226	197	165	140	180	84	109	52	
2GH 790-H26	3~	382	384	125	290	325	401	180	197	143	140	180	84	109	54	

Type	Phase	(mm)										X-Holes	(mm)	
型号	相位	φP	Q	φR	S	U	V	V _i	Y×Z	φX	W			
2GH 610-H06	3~	56	83	13	5	M8×17	M25×1.5	M25 × 1.5	M8×20	0°/120°/240°	226	38		
2GH 610-H16	3~	56	83	13	5	M8×17	M25×1.5	M25 × 1.5	M8×20	0°/120°/240°	226	38		
2GH 610-H26	3~	56	83	13	5	M8×17	M32×1.5	M32 × 1.5	M8×20	0°/120°/240°	226	42		
2GH 630-H06	3~	56	83	13	5	M8×17	M25×1.5	M25 × 1.5	M8×20	0°/120°/240°	226	38		
2GH 630-H16	3~	56	83	13	5	M8×17	M32×1.5	M25 × 1.5	M8×20	0°/120°/240°	226	38		
2GH 630-H26	3~	56	83	13	5	M8×17	M32×1.5	M32 × 1.5	M8×20	0°/120°/240°	226	42		
2GH 710-A11	1~	55	83	15	5	M8×17	M25×1.5	M25 × 1.5	M10×20	0°/120°/240°	240	38		
2GH 710-H06	3~	55	83	15	5	M8×17	M25×1.5	M25 × 1.5	M10×20	0°/120°/240°	240	38		
2GH 710-H16	3~	55	83	15	5	M8×17	M25×1.5	M25 × 1.5	M10×20	0°/120°/240°	240	38		
2GH 710-H26	3~	55	83	15	5	M8×17	M32×1.5	M32 × 1.5	M10×20	0°/120°/240°	240	42		
2GH 710-H37	3~	55	83	15	5	M8×17	M32×1.5	M32 × 1.5	M10×20	0°/120°/240°	240	42		
2GH 730-H06	3~	55	83	15	5	M8×17	M25×1.5	M25 × 1.5	M10×20	0°/120°/240°	240	38		
2GH 730-H16	3~	55	83	15	5	M8×17	M25×1.5	M25 × 1.5	M10×20	0°/120°/240°	240	38		
2GH 730-H26	3~	55	83	15	5	M8×17	M32×1.5	M32 × 1.5	M10×20	0°/120°/240°	240	42		
2GH 730-H37	3~	55	83	15	5	M8×17	M32×1.5	M32 × 1.5	M10×20	0°/120°/240°	240	42		
2GH 790-H26	3~	55	83	15	5	M8×17	M25×1.5	M25 × 1.5	M10×20	0°/120°/240°	240	38		

尺寸 Dimension

Dimensions for side channel blower

气环风机尺寸



Type	Phase	(mm)																	
型号	相位	A	A'	B	C	D	E	F	G	H	H'	J	K	L	M	N	O	φP	Q
2GH 520-H46	3	372	411	371	60	260	295	499	226	175	144	165	115	155	96	171	48	55	83
2GH 520-H57	3	372	411	371	60	260	295	499	226	175	144	165	115	155	96	171	48	55	83
2GH 720-H16	3	426	426	410	63	290	325	488	180	197	162	143	140	180	84	205	53	55	83
2GH 720-H26	3	426	426	410	63	290	325	542	180	197	162	165	140	180	84	205	53	55	83
2GH 720-H37	3	426	426	410	63	290	325	542	226	197	162	165	140	180	84	205	53	55	83
2GH 720-H47	3	426	426	410	154	290	325	578	226	197	162	186	140	180	225	205	94	55	83
2GH 720-H57	3	426	426	410	154	290	325	578	241	197	162	186	140	180	225	205	94	55	83

Type	Phase	(mm)									X-Holes	(mm)
型号	相位	φR	S	T	U	V	V _i	φX	YxZ		W	
2GH 520-H46	3	14	4	116	M8x17	M32x1.5	M32x1.5	200	M8x20	51.5°/171.5°/291.5°	42	
2GH 520-H57	3	14	4	116	M8x17	M32x1.5	M32x1.5	200	M8x20	51.5°/171.5°/291.5°	42	
2GH 720-H16	3	15	5	130	M8x17	M25x1.5	M25x1.5	240	M10x20	51.5°/171.5°/291.5°	38	
2GH 720-H26	3	15	5	130	M8x17	M32x1.5	M32x1.5	240	M10x20	51.5°/171.5°/291.5°	42	
2GH 720-H37	3	15	5	130	M8x17	M32x1.5	M32x1.5	240	M10x20	51.5°/171.5°/291.5°	42	
2GH 720-H47	3	15	5	130	M8x17	M32x1.5	M32x1.5	240	M10x20	51.5°/171.5°/291.5°	42	
2GH 720-H57	3	15	5	130	M8x17	M32x1.5	M32x1.5	240	M10x20	51.5°/171.5°/291.5°	42	

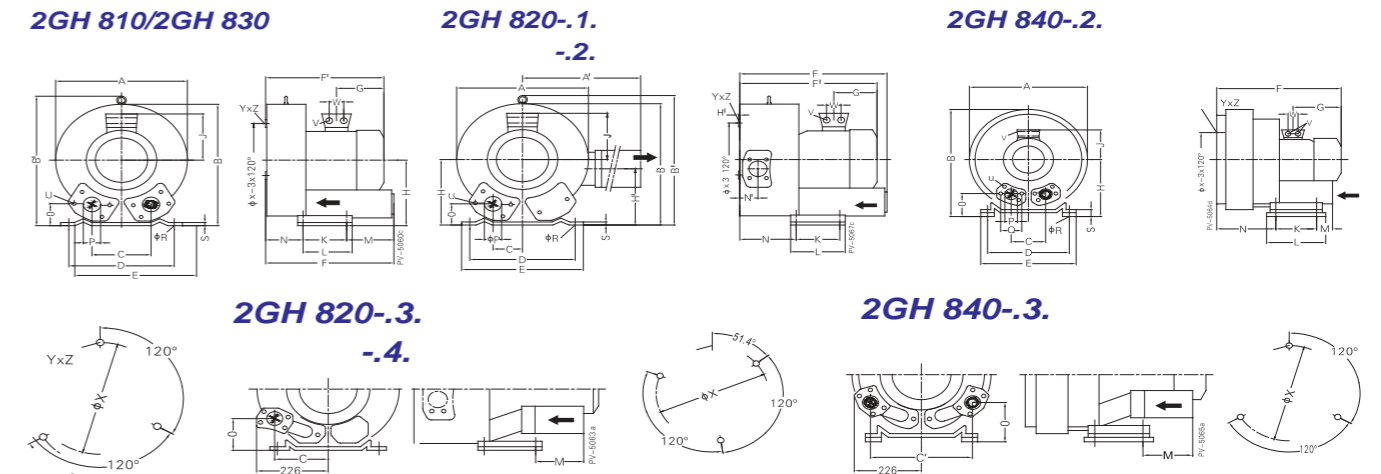
Type	Phases	(mm)													
型号	相位	A	B	C	C'	D	E	F	G	H	J	K	L	M	N
2GH 740-H37	3	420	410	125	—	290	325	542	226	197	165	140	180	84	205
2GH 740-H47	3	420	468	—	308	290	325	578	241	257	186	140	180	225	205
2GH 740-H57	3	420	468	—	308	290	325	578	226	257	186	140	180	225	205

Type	Phases	(mm)										X-Holes	(mm)
型号	相位	O	φP	Q	φR	S	U	V	φX	YxZ		W	
2GH 740-H37	3	53	55	83	15	65	M8x17	2xM32x1.5	240	M10x20	0°/120°/240°	42	
2GH 740-H47	3	153	55	83	15	65	M8x17	2xM32x1.5	240	M10x20	0°/120°/240°	42	
2GH 740-H57	3	153	55	83	15	65	M8x17	2xM32x1.5	240	M10x20	0°/120°/240°	42	

尺寸 Dimension

Dimensions for side channel blower

气环风机尺寸



Type	Phases	(mm)																
型号	相位	A	A'	B	B'	C	D	E	F	F'	G	H	H'	J	K	L	M	
2GH 810-H07	3	451	—	461	509	152	356	433	465	450	226	240	—	165	170	217	140	
2GH 810-H17	3	451	—	461	509	152	356	433	485	477	241	240	—	186	170	217	140	
2GH 810-H27	3	451	—	461	509	152	356	433	485	477	241	240	—	186	170	217	140	
2GH 820-H17	3	500	549	490	509	—	356	545	598	589	241	240	199	186	170	217	140	
2GH 820-H27	3	500	549	490	509	—	356	545	598	589	241	240	199	186	170	217	140	
2GH 820-H37	3	500	549	490	509	—	356	545	686	694	288	240	199	239	170	217	312	
2GH 820-H47	3	500	549	490	509	152	356	545	686	694	288	240	199	239	170	217	312	
2GH 830-H07	3	451	—	461	509	152	356	449	481	466	226	240	—	165	170	217	140	
2GH 830-H17	3	451	—	461	509	152	356	449	501	492	241	240	—	186	170	217	140	
2GH 830-H27	3	451	—	461	509	152	356	449	501	492	241	240	—	186	170	217	140	

Type	Phases	(mm)												X-Holes
型号	相位	N	N'	O	φP	φR	S	V	W	φX	YxZ			
2GH 810-H07	3	124	—	65	65	15	6	2xM32x1.5	42	286	M12x20	0°/120°/240°		
2GH 810-H17	3	124	—	65	65	15	6	2xM32x1.5	42	286	M12x20	0°/120°/240°		
2GH 810-H27	3	124	—	65	65	15	6	2xM32x1.5	42	286	M12x20	0°/120°/240°		
2GH 820-H17	3	236	84	65	65	15	6	2xM32x1.5	42	286	M12x20	58.5°/171.5°/291.5°		
2GH 820-H27	3	236	84	65	65	15	6	2xM32x1.5	42	286	M12x20	58.5°/171.5°/291.5°		
2GH 820-H37	3	212	84	105	65	15	6	2xM32x1.5	54	286	M12x20	58.5°/171.5°/291.5°		
2GH 820-H47	3	212	84	105	65	15	6	2xM32x1.5	54	286	M12x20	58.5°/171.5°/291.5°		
2GH 830-H07	3	139	—	65	65	15	6	2xM32x1.5	42	286	M12x20	0°/120°/240°		
2GH 830-H17	3	139	—	65	65	15	6	2xM32x1.5	42	286	M12x20	0°/120°/240°		
2GH 830-H27	3	139	—	65	65	15	6	2xM32x1.5	42	286	M12x20	0°/120°/240°		

Type	Phases	(mm)										
型号	相位	A	B	C	C'	D	E	F	G	H	J	K
2GH 840-H27	3	500	550	152	—	356	394	598	241	300	186	170
2GH 840-H27	3	500	550	152	336	356	394	686	288	300	239	170

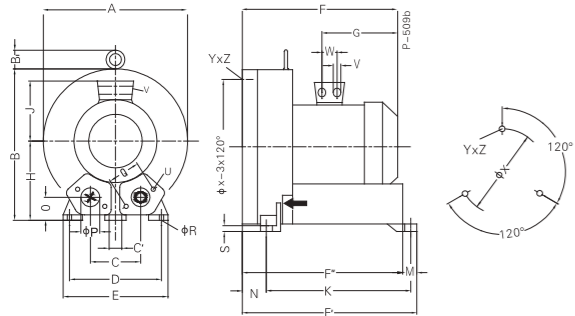
Type	Phases	(mm)											
型号	相位	L	M	N	O	φP	φR	S	V	W	φX	YxZ	X-Holes
2GH 840-H27	3	217	140	236	125	65	15	66	2xM32x1.5	42	286	M12x20	0°/120°/240°
2GH 840-H27	3	217	312	211	165	65	15	66	2xM40x1.5	54	286	M12x20	0°/120°/240°

尺寸 Dimension

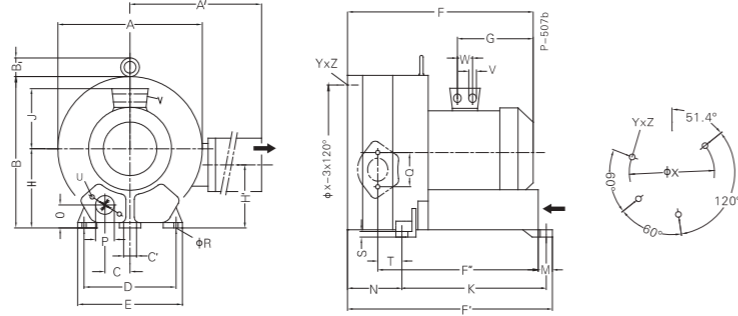
Dimensions for side channel blower

气环风机尺寸

2GH 910/2GH930



2GH 920



Type	Phases	(mm)															
型号	相位	A	B	B'	C	C'	D	E	F	F'	F''	G	H	J	K	M	N
2GH 910-H07	3~	550	569	55	207	15	360	415	532	644	605	268	300	186	533	39	89
2GH 910-H17	3~	550	569	55	207	15	360	415	611	644	605	345	300	239	533	39	89
2GH 910-H37	3~	550	569	55	207	15	360	415	611	644	605	345	300	239	533	39	89
2GH 930-H07	3~	550	569	55	207	15	360	415	570	682	643	268	300	186	533	39	127
2GH 930-H17	3~	550	569	55	207	15	360	415	649	682	643	345	300	239	533	39	127
2GH 930-H37	3~	550	569	55	207	15	360	415	649	682	643	345	300	239	533	39	127

Type	Phases	(mm)										X-Holes
型号	相位	O	φP	Q	φR	S	U	V	W	φX	Y×Z	X-Holes
2GH 910-H07	3~	92	100	150	15	21	M12×30	2×M32×1.5	42	490	M12×30	0°/120°/240°
2GH 910-H17	3~	92	100	150	15	21	M12×30	2×M40×1.5	54	490	M12×30	0°/120°/240°
2GH 910-H37	3~	92	100	150	15	21	M12×30	2×M40×1.5	54	490	M12×30	0°/120°/240°
2GH 930-H07	3~	92	100	150	15	21	M12×30	2×M32×1.5	42	490	M12×30	0°/120°/240°
2GH 930-H17	3~	92	100	150	15	21	M12×30	2×M40×1.5	54	490	M12×30	0°/120°/240°
2GH 930-H37	3~	92	100	150	15	21	M12×30	2×M40×1.5	54	490	M12×30	0°/120°/240°

Type	Phases	(mm)																		
型号	相位	A	A'	B	B1	C	C'	D	E	F	F'	F''	G	H	H'	J	K	M	N	O
2GH 920-H17	3~	615	780	607	55	103.5	15	360	415	752	786	634	345	300	234	239	533	39	230	92
2GH 920-H27	3~	615	780	607	55	103.5	15	360	415	752	786	634	345	300	234	239	533	39	230	92
2GH 920-H37	3~	615	780	607	55	103.5	15	360	415	752	786	634	345	300	234	239	533	39	230	92
2GH 920-H47	3~	615	780	607	55	103.5	15	360	415	812	786	634	345	300	234	239	533	39	230	92

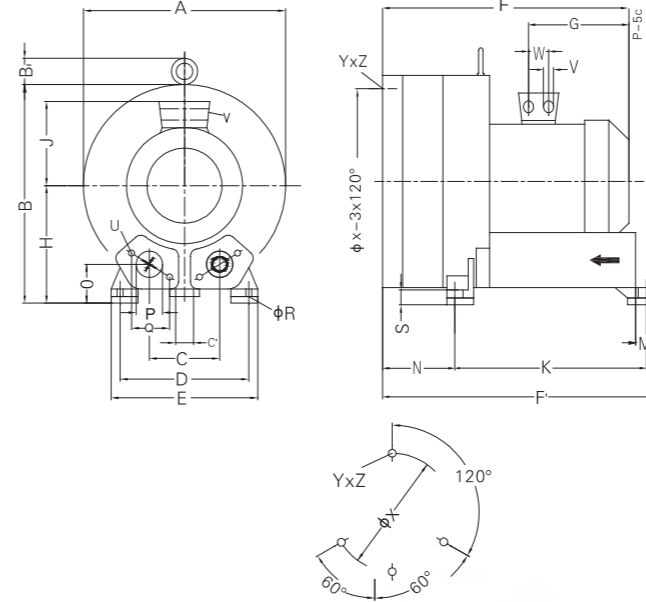
Type	Phases	(mm)										X-Holes
型号	相位	φP	Q	φR	S	U	V	W	φX	Y×Z	X-Holes	
2GH 920-H17	3~	100	150	15	21	M12×30	2×M40×1.5	54	490	M12×30	51°/120°/240°	
2GH 920-H27	3~	100	150	15	21	M12×30	2×M40×1.5	54	490	M12×30	51°/120°/240°	
2GH 920-H37	3~	100	150	15	21	M12×30	2×M40×1.5	54	490	M12×30	51°/120°/240°	
2GH 920-H47	3~	100	150	15	21	M12×30	2×M40×1.5	54	490	M12×30	51°/120°/240°	

尺寸 Dimension

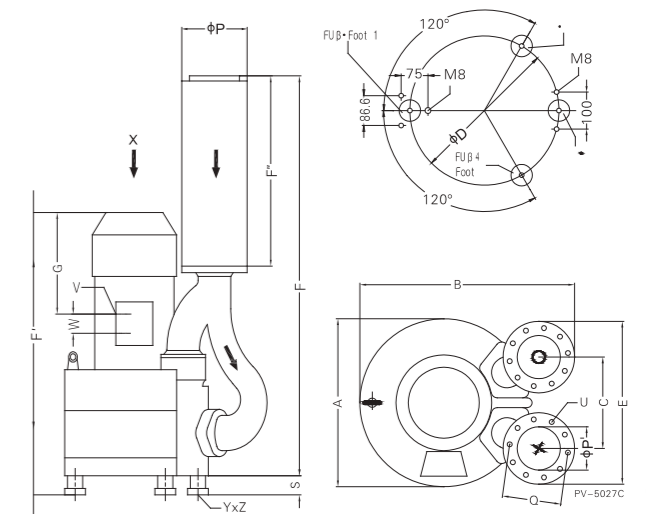
Dimensions for side channel blower

气环风机尺寸

2GH 940.



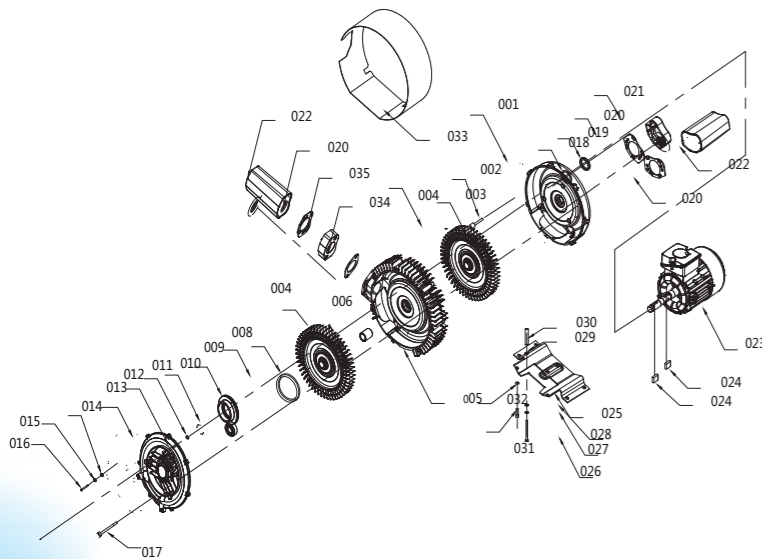
2GH 943.



Type	Phases	(mm)																			X-Holes						
型号	相位	A	B	B'	C	C'	D	E	F	F'	G	H	J	K	M	N	O	φP	Q	φR	S	U	V	W	φX	Y×Z	X-Holes
2GH 940-H27	3~	615	657	16	207	15	360	415	752	786	345	350	239	533	39	280	142	100	140	15	71	M12×35	2×M40×1.5	54	490	M12×30	0°/120°/240°
2GH 940-H37	3~	615	657	16	207	15	360	415	752	786	345	350	239	533	39	280	142	100	140	15	71	M12×35	2×M40×1.5	54	490	M12×30	0°/120°/240°
2GH 940-H47	3~	615	657	16	207	15	360	415	812	786	345	350	239	533	39	280	142	100	140	15	71	M12×35	2×M40×1.5	54	490	M12×30	0°/120°/240°

Type	Phases	(mm)																
型号	相位	A	B	C	D	E	F	F'	G	P	P'	Q	S	U	V	W	Y×Z	
2GH 943-H27	3~	615	723	307	490	526	1201	848	291	219	135	201	58	M8×40	2×M40×1.5	54	M12×10.5	
2GH 943-H37	3~	615	723	307	490	526	1201	848	291	219	135	201	58	M8×40	2×M40×1.5	54	M12×10.5	
2GH 943-H47	3~	615	723	307	490	526	1201	908	351	219	135	201	58	M8×40	2×M40×1.5	54	M12×10.5	

美其乐风机型号说明
Meiqile description



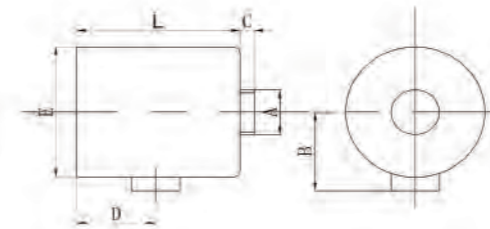
风机型号说明

2 GH 2 1 0 H 0 6

- 电机序列号
- H6 : 220-240V△/345-415V Y
- H7 : 三相 345-415V△/600-720V Y
- A1 : 单相 230V
- V5 : 单相 115/230V
- 0 : 底板安装(可立式安装)
- 3 : 立式安装
- 1: 单叶轮
- 2: 双叶轮 (串联)
- 3: 单级大流量
- 4: 双级增流量 (并联)
- 产品序列号
- 美其乐旋涡风机
- 2:GH系列风机
- 4GH系列风机

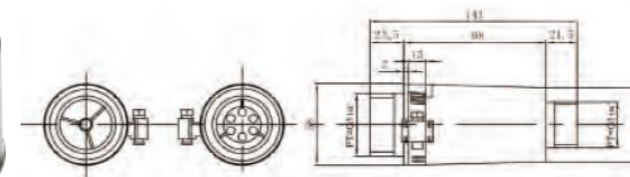
配件编号 (No.)	配件名称	Description	配件编号 (No.)	配件名称	Description	配件编号 (No.)	配件名称	Description
01	电机端罩	motor end shield	13	泵盖	pump cover	25	底板	backplane
02	螺丝	screw	14	O型圈	o-ring	26	螺丝	screw
03	垫圈	washer	15	垫片	washer	27	弹簧垫片	spring washer
04	叶轮	impeller	16-17	螺丝	screw	28	垫片	washer
05	中泵体	absorbing pump	18	毛毡圈	felt ring	29	垫片	washer
06	套管	sleeve	19	油封	oil seal	30	套管	sleeve
08	O型圈	o-ring	20	纸垫片	paper pads	31	螺丝	screw
09	轴承座	bearing cover	21	法兰	flansch	32	方母	base
10	轴承	gasket	22	消音器整体	silencer complete	33	斗篷	cloak
11	垫片	washer	23	电机总成	motor assembly	34	纸垫片	paper pads
12	螺丝	screw	24	平行键	parallel key	35	法兰	flansch

真空过滤器
vacuum filter



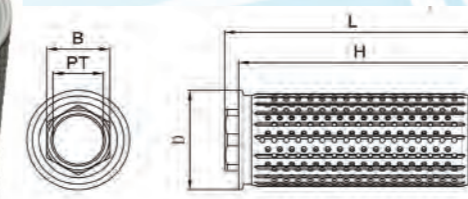
A	B (mm)	C (mm)	D (mm)	E (mm)	L (mm)
G1 1/2"	E/2+C	15	67	158.5	133
G2	E/2+C	20	109	193.5	226.5
G2 1/2"	E/2+C	20	109	193.5	226.5

卸压阀
Pressure Relief Valve



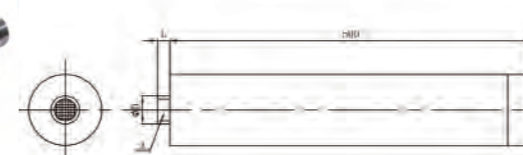
型号 Model	口径 Caliber	L (mm)	规格 Specifications
RV-01	G1 1/4"	143	0-300mbar
RV-02	G1 1/4"	143	300-600mbar

过滤器
Air Filter



型号 Model	PT	D(mm)	L(mm)	H(mm)	B(mm)	过滤精度 Filtration Precision	流量 Flow (m³/h)	重量 Weight (kg)
JL-08	G1	58	170	155	42	100	110	0.20
JL-10	G1 1/4"	65.5	171	160	50	100	210	0.35
JL-12	G1 1/2"	86	192	177.5	58	100	285	0.49
JL-16	G2	103	195	181	71	100	395	0.65
JL-20	G2 1/2"	114.6	230	247	85	100	750	1.20
JL-32	G4	208	380	357	142	100	1000	2.45

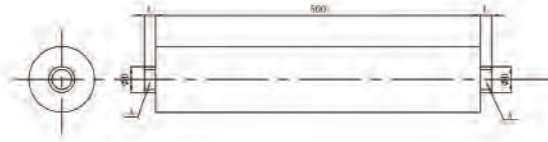
消音器
Muffler



型号 Model	A	D(mm)	L(mm)
FLS-25	G2 1/2"	78	24
FLS-12	G4	125	40

产品配件 Accessories

消音器
Muffler



型号 Model	A	D(mm)	L(mm)
FLS-12	G1 1/4"	40	17
FLS-15	G1 1/2"	48	19
FLS-20	G2	62	21

数显压力表
Digital pressure gauge



风刀
air knife



90度弯管
90 degree elbow



皮管接头
pipe connector



补芯
Bushing



电磁阀
Solenoid valve



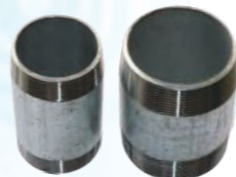
三通
T connector



导流管
Guidvane



对丝
nipple



附录 Annex

换算表 Conversion tables

初始单位 Beginning units	换算因子 Conversion factor	目标单位 Resulting units
Pa	0.01	Mba/Mbar
hPa	1.0	mbambar
kPa	10.0	mbar
mmH ₂ O	0.098	mbar
mH ₂ O	98.07	mbar
at	980.7	mbar
inch H ₂ O	2.491	mbar
PSI lpt/in ²	68.94	mbar
mbar	100	Pa
mbar 1	10.2	mm H ₂ O
mbar	10.2·10 ⁻³	M H ₂ O
mbar	1.02·10 ⁻³	at
mbar	0.4016	inch H ₂ O
mbar	14.505·10 ⁻³	PSI lpt/in ²

初始单位 Beginning units	换算因子 Conversion factor	目标单位 Resulting units
l/min	0.06	m ³ /h
gal/min	0.227	m ³ /h
ft ³ /min	1.699	m ³ /h
m ³ /h	16.667	i/min
m ³ /h	4.403	gal/min
m ³ /h	0.588	ft ³ /min

初始单位 Beginning units	换算因子 Conversion factor	目标单位 Resulting units
hp	0.746	kw
btu/h	293.1	kw
kw	1.341	hp
kw	3.41·10 ⁻³	btu/h

初始单位 Beginning units	换算因子 Conversion factor	目标单位 Resulting units
lbm	0.454	kg
kg	2.205	lbm

初始单位 Beginning units	换算因子 Conversion factor	目标单位 Resulting units
in.	25.4mm	
in.	0.0254	m
ft	305	mm
ft	0.305	m
m	39.37	in.
m	3.28	f

换算 Conversion 自 from	至 to	公式 Formula
°F	K	$T[K] = \frac{T[°F] + 459.67}{1.8}$
°F	°C	$T[°C] = \frac{T[°F] - 32}{1.8}$
K	°F	$t[°F] = 1.8 \cdot T[K] - 459.67$
°C	°F	$t[°F] = 1.8 \cdot t[°C] + 32$

换算举例
250[inch H O]-2.491=622.5[mbar]
下面的公式用来把“以水银柱高度度量的真空度”换算成“绝对压力”
 $1013 - X[\text{inches of mercury vacuum}] - 33.8 = Y[\text{mbar abs.}]$
绝对压力
绝对是指理想真空（绝对为零）为基准而得到的测量值。所以绝对总是比参考值大。
表压
表压是指高于标准大气压力的测量值。即以标准大气压为基准。
因此实际测量值总是比基准大。
真空度
真空度是指低于标准大气压力的测量值。测量基准仍为标准大气压，所以实际测量值总是比基准值小。
Example of conversion
 $250[\text{inch H O}] - 2.491 = 622.5[\text{mbar}]$
The following formula is used to convert value from "inches of mercury vacuum" to "mbar abs."
 $1013 - X[\text{inches of mercury vacuum}] - 33.8 = Y[\text{mbar abs.}]$
Absolute pressure
The pressure measured from absolute zero, using ideal vacuum as the datum. The measured pressure is always greater than the reference pressure.
Total pressure difference pressure
The pressure measured above the prevailing atmospheric pressure. The datum is the prevailing atmospheric pressure and the measured pressure is always higher than the datum.
Total pressure difference vacuum
The pressure measured lower than the prevailing atmospheric pressure, The datum is the prevailing atmospheric pressure and the measured pressure is always lower than the datum.

